

AAE Model: BT-121470-P

BT-121470-P - Portable Batting Tunnel

12'H x 14'W x 70'L

Specifications & Accessories

Main Net: 1-3/4" square x 2.5mm thick braided, UV-treated polyethylene netting; 12' High x 14' Wide x 70' Long

*OPTIONAL: Model No. BT-NR Batting Tunnel Net Retractor

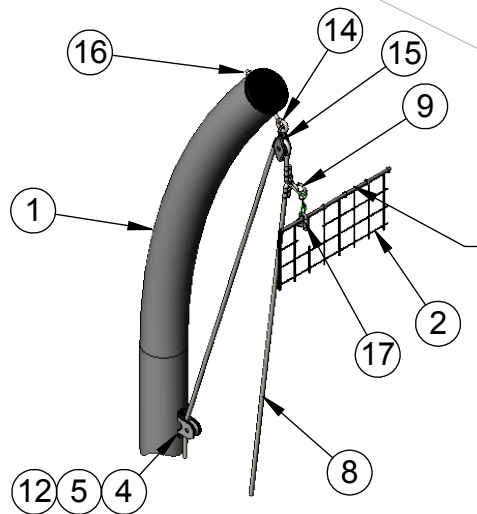
- Secures netting to uprights to reduce billowing due to wind

Ø4" x .125" wall x 14' high aluminum tube (6061T6) with standard mill finish and bent for 2'-0" offset (x10)

*OPTIONAL: BT-PC Black powdercoat finish available

Rigid aluminum cross supports are bolted together top & bottom for additional stability

Upright Detail



Weave cable through length of netting

Uprights install onto welded base supports

- 5' outriggers (7'-4" for corner posts) with added weight for stability
- Precisely angled welded brackets allow for easily repeatable tunnel assembly



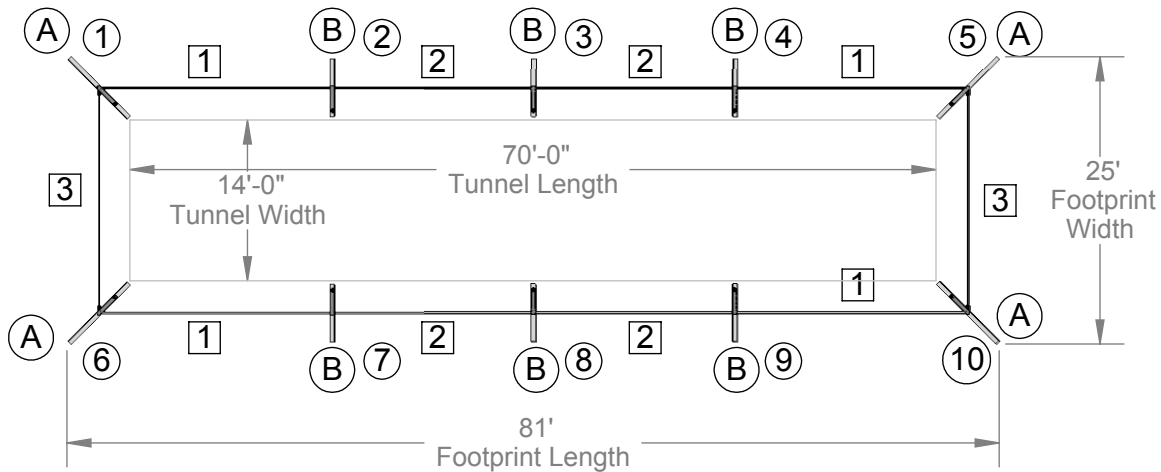
Aluminum Athletic Equipment
1000 Enterprise Drive, Royersford, PA 19468
Toll Free: (800) 523-5471 Fax: (610) 825-2378
www.AAEsports.com

DESCRIPTION:		
BT-121470-P - Portable Batting Tunnel		
NOTE: 12'H x 14'W x 70'L Portable Batting Tunnel Specifications & Accessories		
MODEL:	CATEGORY:	DATE:
BT-121470-P	CUSTOMER	07/25/11
DWN. BY:	CAD FILE:	DWG. NO.:
CED	BT-121470-P Packet	BT-121470-P-C-001

BT-121470-P - Portable Batting Tunnel

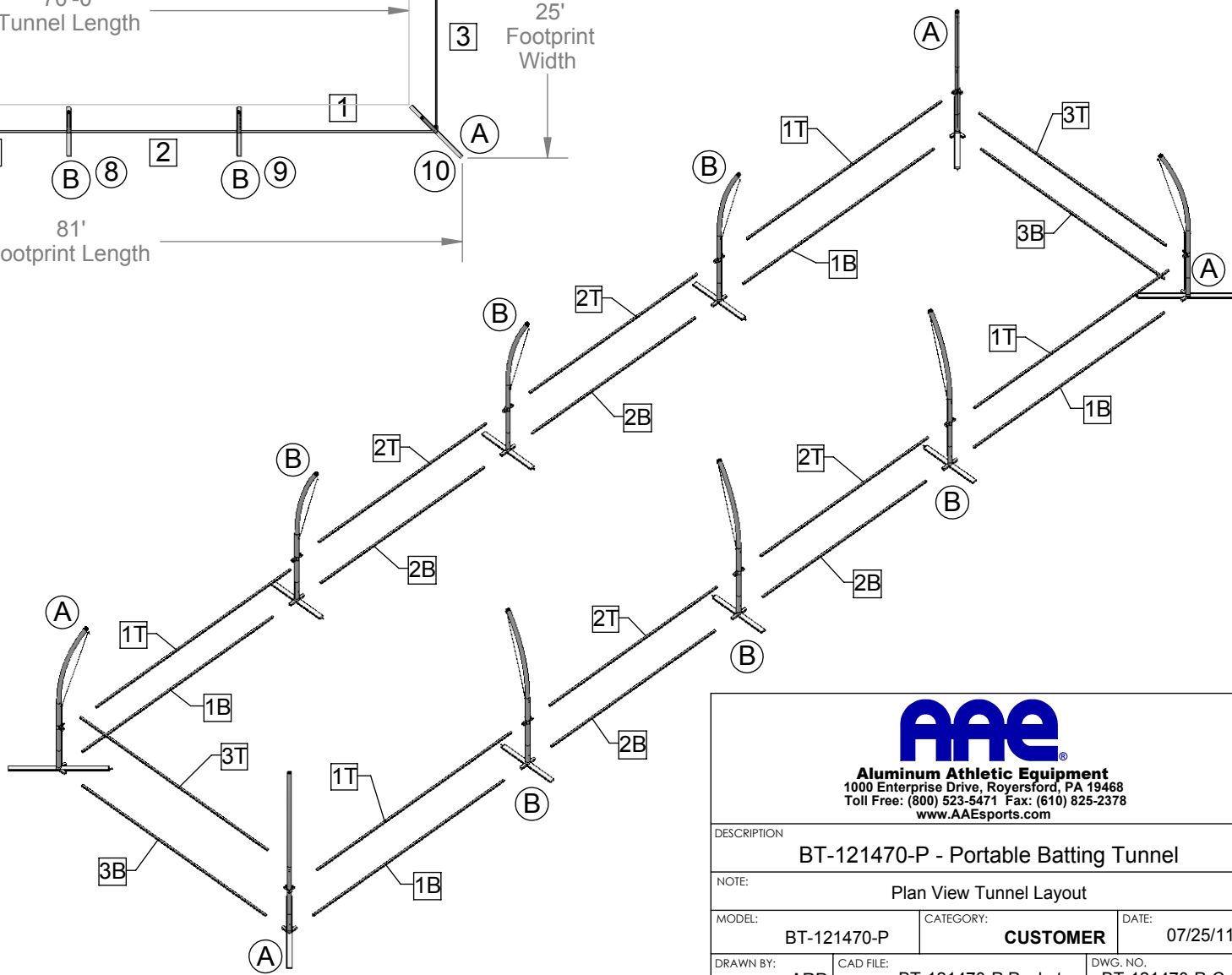
12'H x 14'W x 70'L

Tunnel Layout



Bracer Bar Lengths

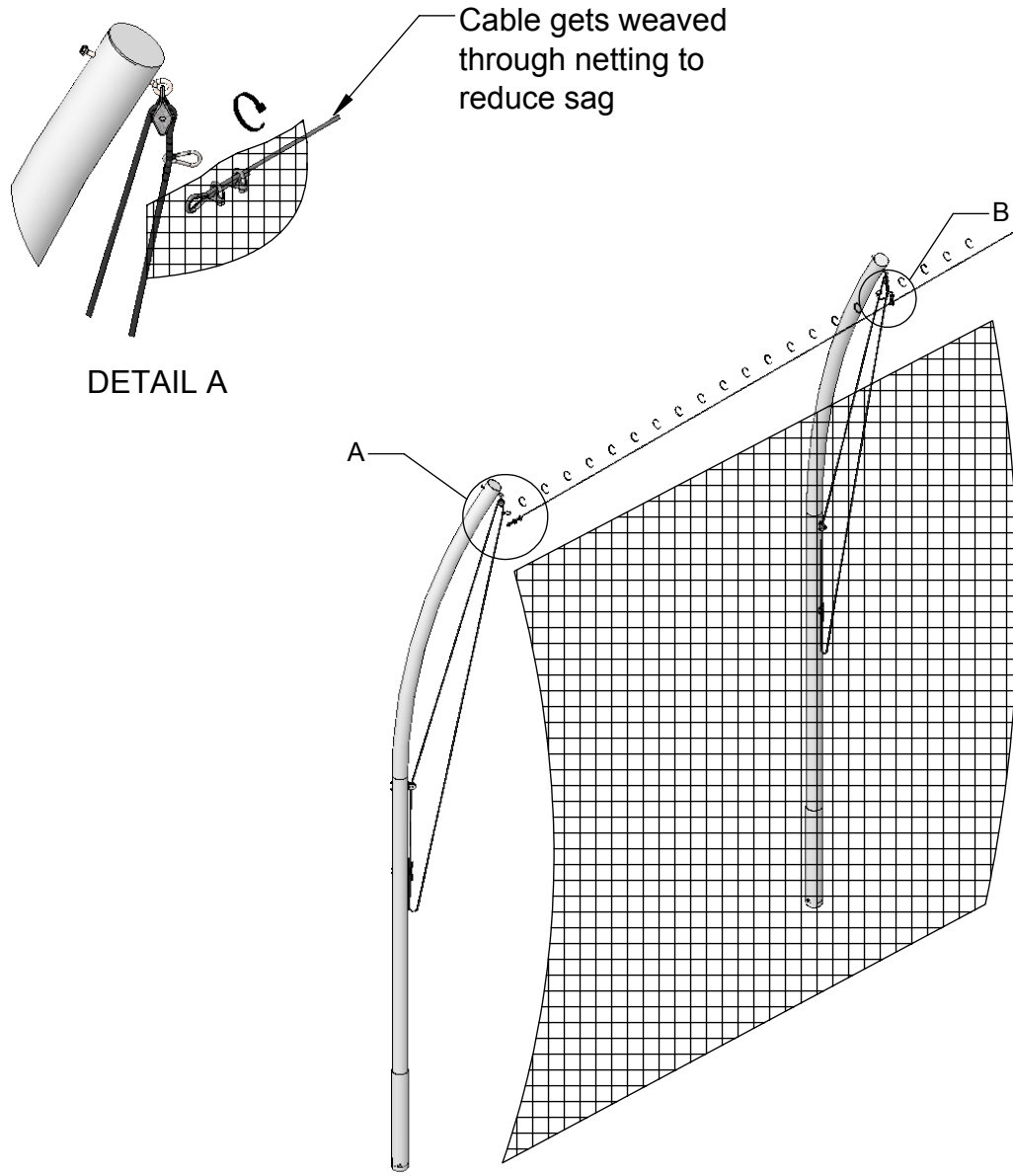
	Length
1T	237 3/4"
1B	233 1/4"
2T	204 3/4"
2B	200"
3T	228 3/4"
3B	224 1/2"



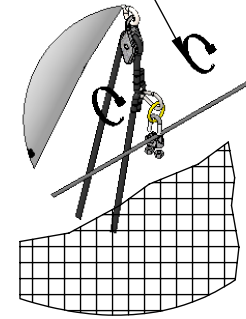
Aluminum Athletic Equipment
 1000 Enterprise Drive, Royersford, PA 19468
 Toll Free: (800) 523-5471 Fax: (610) 825-2378
www.AAEsports.com

DESCRIPTION		
BT-121470-P - Portable Batting Tunnel		
NOTE: Plan View Tunnel Layout		
MODEL:	CATEGORY:	DATE:
BT-121470-P	CUSTOMER	07/25/11
DRAWN BY:	CAD FILE:	DWG. NO.:
ARP	BT-121470-P Packet	BT-121470-P-C-002

Batting Tunnel Cable



DETAIL A



DETAIL B

Use cable ties every 1 to 2 feet to secure net to cable



Aluminum Athletic Equipment
 1000 Enterprise Drive, Royersford, PA 19468
 Toll Free: (800) 523-5471 Fax: (610) 825-2378
www.AAEsports.com

DESCRIPTION:		
Batting Tunnel Cable		
NOTE:		
Cable Diagram		
MODEL:	CATEGORY:	DATE:
BT-121470-P	CUSTOMER	01/30/2018
DWN. BY:	CAD FILE:	DWG. NO.:
CED	BT-121470-P CAD Packet	BT-121470-P-C-003

BT-121470-P
12'H x 14'W x 70'L PORTABLE BATTING TUNNEL
PARTS LIST

Pt #	Item	Description	Qty.
1	Upright	4.00" o.d. x .125 x 14'0" aluminum tube, 24" arc offset, 6061T6	10
2	Main Net	1-3/4" square x 12' high x 14' wide x 70' long poly net	1
3	Welded Base Supports	5' outriggers (7'-4" for corner posts) with welded square tubes for bracer supports	10
4	Pulley	#18-1 deck block galvanized steel pulley	10
5	Pulley bolt	1/4"- 20 x 4-1/2" FH mach. screw, plated	20
6	Cleat	6" galvanized steel cleat	10
7	Cleat bolt	1/4"- 20 x 5-1/2" FH mach. screw, plated	20
8	Hoisting Rope	#10 polypropylene white braided rope - 21' long	10
9	Pear Clip	Spring hook snap, 1/4" dia., 5/16" snap, plated	20
10	Eyebolt	3/8"-16 x 2-1/2" steel eyebolt, plated	10
11	Bracebar	2" sq. x 0.125" wall aluminum tube, 6061T6	20
12	Nut	1/4"-20 steel hex nut, S.S.	40
13	Nut	1/4"-20 steel acorn nut, S.S.	20
14	Eyebolt	5/16"-18 x 6" steel eyebolt, plated	10
15	Hanging Pulley	#3-5 fast eye, galvanized steel, swivel pulley	10
16	Nut	5/16"-18 steel hex nut, plated	10
17	Cable Clamp Assembly	Galvanized steel cable clamp and brass O-ring	10
18	Brace Sleeve Bolt Assembly	3/8"- 16 x 3" steel hex bolt, two 3/8" stainless washers, 3/8" loc washer and a 3/8" steel hex nut	40
19	Main Net Cable	70'-0" lg. 1/4" vinyl-coated galvanized cable looped with galvanized thimble at one end	2

FOR TECHNICAL ASSISTANCE, CALL 1-800-523-5471

K:\AAE Data\PDF Files\Product Instructions & Parts Lists\Baseball\BT-121470-P\BT-121470-P Parts List.doc
 Copyright © 2011 Aluminum Athletic Equipment Co.

BT-121470-P
12'H x 14'W x 70'L PORTABLE BATTING TUNNEL
LAYOUT AND INSTALLATION INSTRUCTIONS

LAYOUT: Refer to Drawing No. BT-121470-P-C-002

INSTALLATION:

<p>Step No. 1 Placing Welded Base Supports</p>	<p>Referring to Drawing No. BT-121470-P-C-002 place the welded base supports ensuring that the base supports with the angled brackets for the cross supports, labeled A, are placed in the corners at a 45° angle.</p>
<p>Step No. 2 Upright Assembly See Drawing No. BT-121470-C-003</p>	<p>Attach swivel pulley, w/ attached eyebolt, (Item Nos. 15 & 14) to the top hole of the upright using a 5/16"-18 hex nut (Item # 16). (If there are 2 holes present at the top of the upright, mount the pulley and eyebolt through the top hole.)</p> <p>Attach a fixed pulley (Item no. 4) through the middle set of holes using 1/4"-20 x 4-1/2" FH machine screws (Item No. 5) and 1/4"-20 hex nuts (Item No. 14).</p> <p>Attach one cleat (Item No. 6) through the lower set of holes using 1/4"-20 x 5-1/2" FH machine screws (Item No. 7) and 1/4"-20 hex nuts (Item No. 12). Cap threads with 1/4" -20 acorn nuts (Item No. 13).</p> <p>Thread hoisting rope (Item No. 8) with attached pear clip (Item No. 9) through top pulley, middle pulley, and secure to cleat.</p> <p>Once the uprights are completed install the uprights on the proper welded base supports.</p>
<p>Step No. 3 (Installing Bracer Bars)</p>	<p>Attach each bracer bar according to Drawing No. BT-121470-P-C-002 and secure using the brace sleeve bolt assembly, (Item No. 18).</p>
<p>Step No. 4 (Installing Main Net Cable)</p>	<p>Lower hoisting rope w/ attached hook snap and cable clamp (Item Nos. 9 & 17) to about 4 ft. above ground level. (Keep end of rope secured to cleat so you don't lose the rope!). Weave the Main net Cable (Item No. 19) through netting and attach to cable clamps located at the end of each hoisting rope. Clamp the ends of the cable first, and then attach the middle locations next. Use cable ties to secure net to the Main Net cables (Note: The Main Net cables only rundown the "length" of each side of the cage, not the width.) Prior to proceeding to Step No. 5 check that hoisting locations are equally spaced. Raising entire cable assists in confirming proper hoisting locations.</p>

BT-121470-P
12'H x 14'W x 70'L PORTABLE BATTING TUNNEL
LAYOUT AND INSTALLATION INSTRUCTIONS

Step No. 5 Installing Main Net	Layout the main net and attach the cable clamps at each post to the main net cable with black polypropylene net ties, (It is best to locate and attach the top corners of the net first.) Once all posts' hoisting ropes are attached, raise the net all the way and secure the end of the rope firmly and professionally to the cleat. Once net is raised attach the bottom of the net to the eye-bolts attached to the welded base supports with pear clips. (Consult former Navy personnel or handbook for proper method.)
--------------------------------------	-------------------------------------------------------------------------------------------------------------------------------------------------------------------------------------------------------------------------------------------------------------------------------------------------------------------------------------------------------------------------------------------------------------------------------------------------------------------------------------------------------------------------------

FOR TECHNICAL ASSISTANCE, CALL 1-800-523-5471