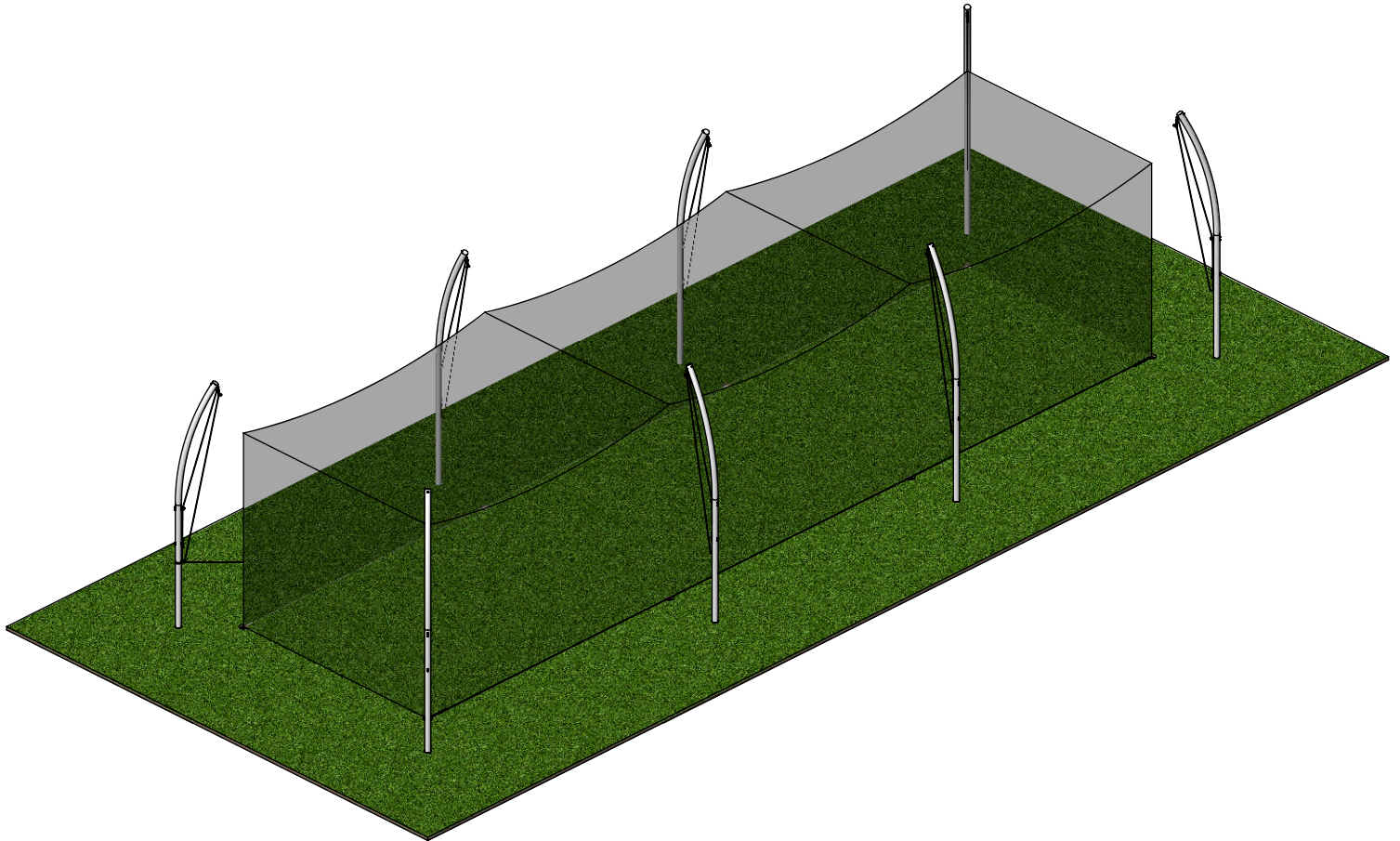


BT-141455

14' H x 14' W x 55' L Batting Tunnel



Aluminum Athletic Equipment
1000 Enterprise Drive, Royersford, PA 19468
Toll Free: (800) 523-5471 Fax: (610) 825-2378
www.AAEsports.com

BT-141455 - Batting Tunnel

14'H x 14'W x 55'L

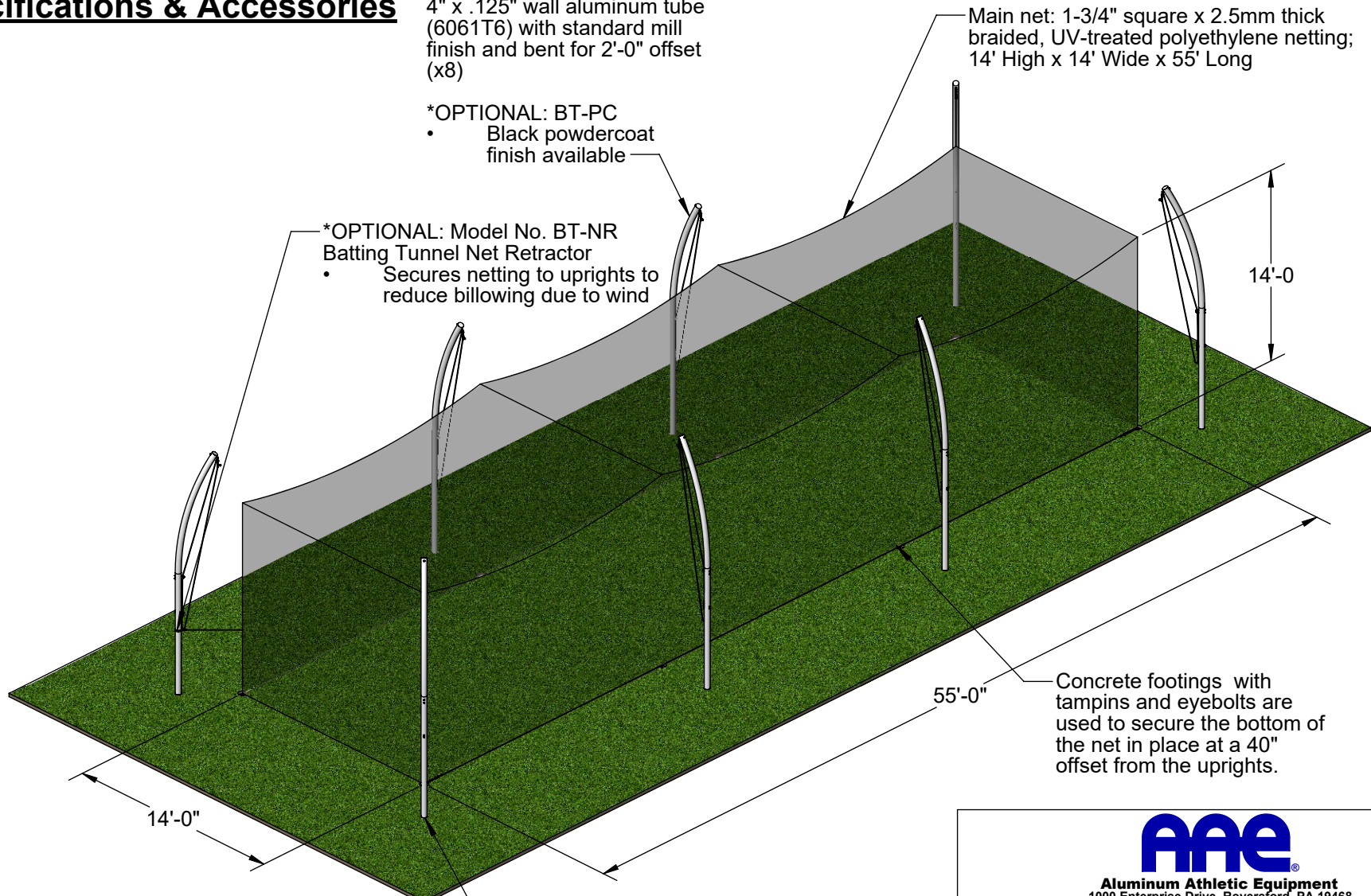
Specifications & Accessories

4" x .125" wall aluminum tube (6061T6) with standard mill finish and bent for 2'-0" offset (x8)

*OPTIONAL: BT-PC
 • Black powdercoat finish available

*OPTIONAL: Model No. BT-NR Batting Tunnel Net Retractor
 • Secures netting to uprights to reduce billowing due to wind

Main net: 1-3/4" square x 2.5mm thick braided, UV-treated polyethylene netting; 14' High x 14' Wide x 55' Long



55'-0" Concrete footings with tampins and eyebolts are used to secure the bottom of the net in place at a 40" offset from the uprights.

14'-0"

Uprights install into 30" deep aluminum ground sleeves, eliminating the need for tedious tie-down cables extending beyond the posts



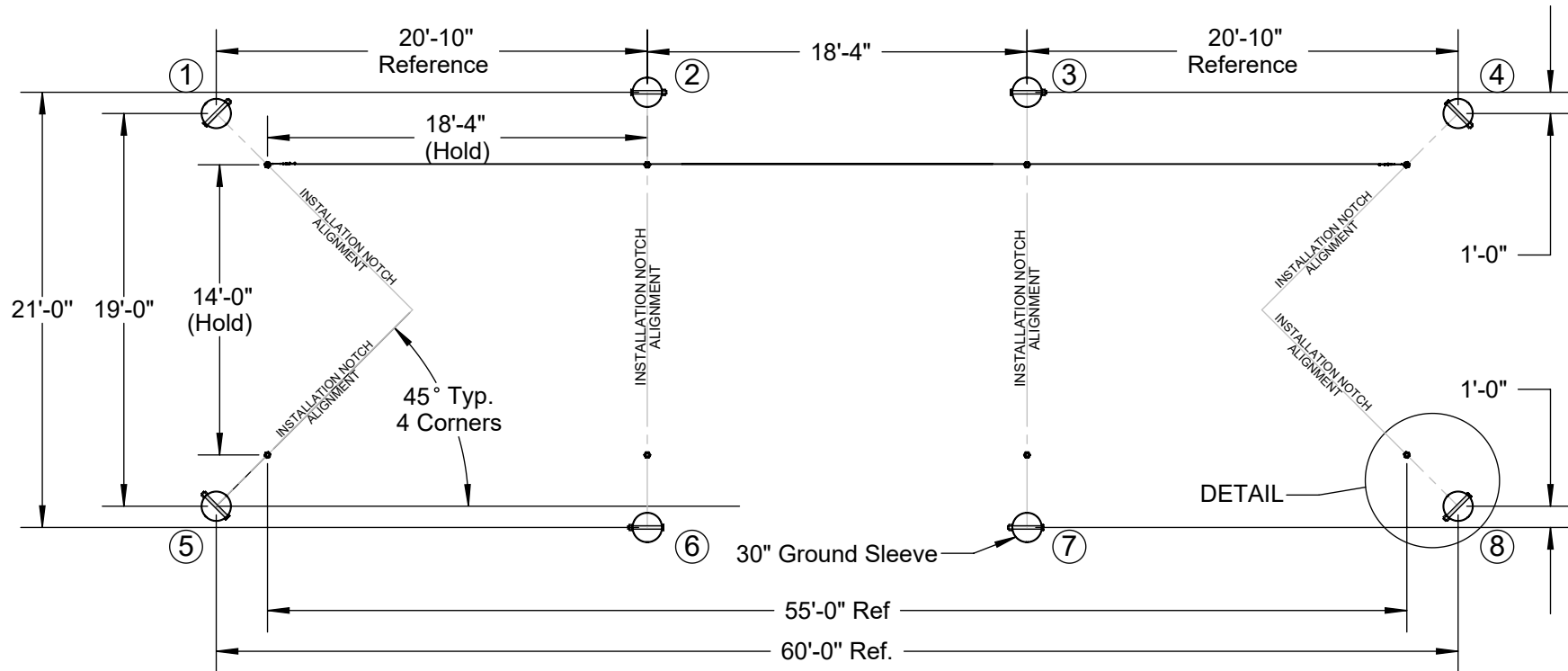
Aluminum Athletic Equipment
 1000 Enterprise Drive, Royersford, PA 19468
 Toll Free: (800) 523-5471 Fax: (610) 825-2378
www.AAEsports.com

DESCRIPTION:		
BT-141455 - Batting Tunnel		
NOTE: 14'H x 14'W x 55'L Batting Tunnel Specifications & Accessories		
MODEL:	CATEGORY:	DATE:
BT-141455	CUSTOMER	07/07/11
DWN. BY:	CAD FILE:	DWG. NO.:
CED	BT-141455 Packet	BT-141455-C-001

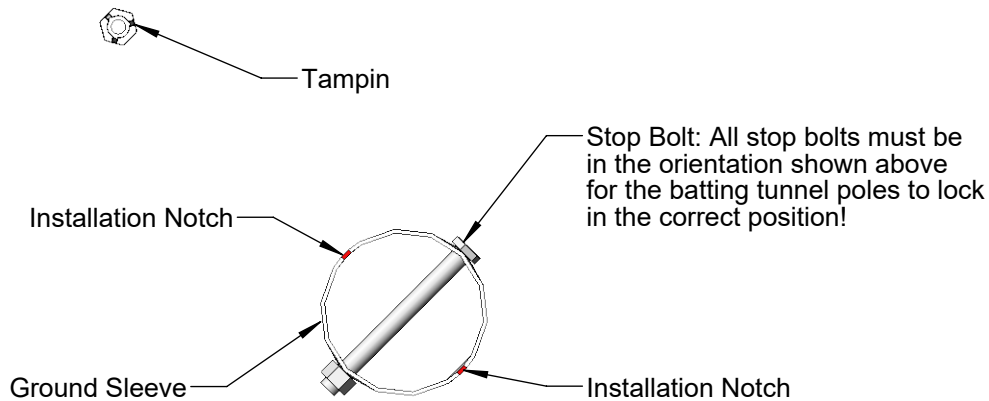
BT-141455 - Batting Tunnel

14'H x 14'W x 55'L

Ground Sleeve Layout



IMPORTANT: Note orientation of stopbolts when installing ground sleeves!!



Additional Notes:

- $\phi 4 \frac{3}{8}$ " OD x .125" wall all aluminum (6061T6) ground sleeves
- All stainless steel hardware

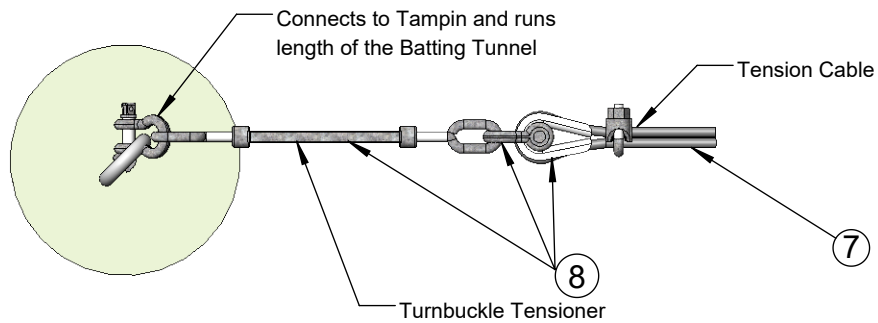
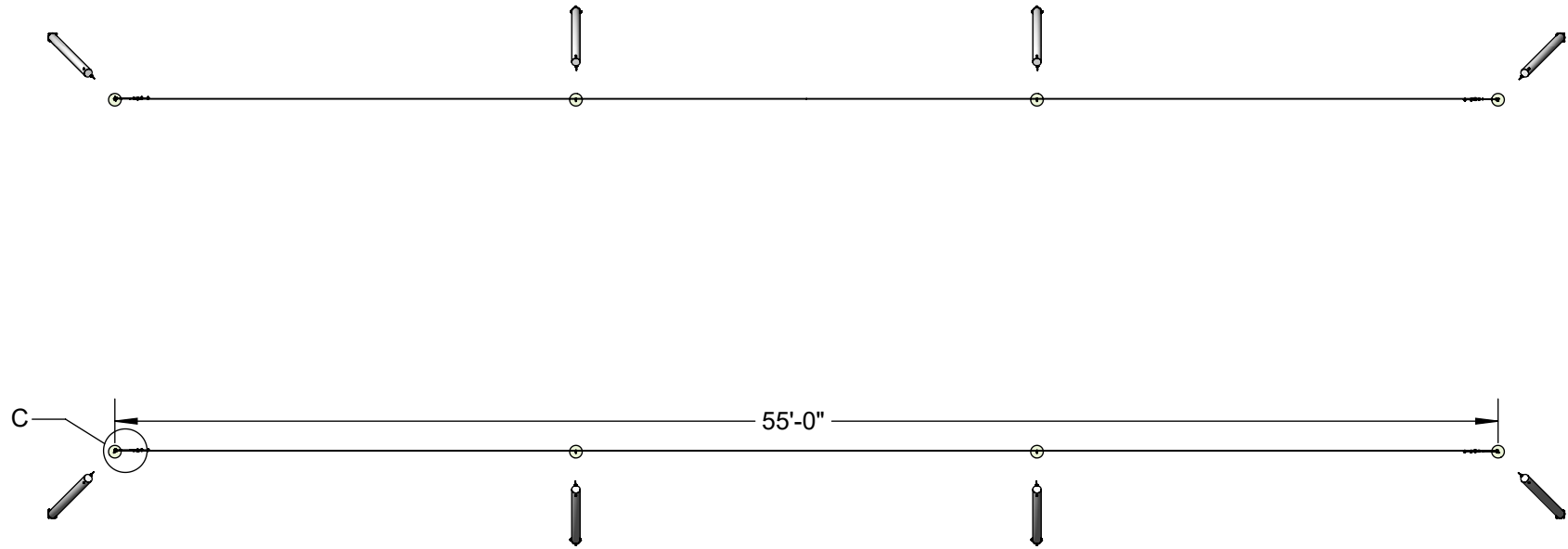


Aluminum Athletic Equipment
 1000 Enterprise Drive, Royersford, PA 19468
 Toll Free: (800) 523-5471 Fax: (610) 825-2378
www.AAEsports.com

DESCRIPTION		
BT-141455 - Batting Tunnel		
NOTE: Plan View Layout of Ground Sleeves		
MODEL:	CATEGORY:	DATE:
BT-141455	CUSTOMER	07/07/11
DRAWN BY:	CAD FILE:	DWG. NO.:
ARP	BT-141455 Packet	BT-141455-C-002

NOT ALL DRAWINGS TO SCALE

Tension Cable Layout



DETAIL C
SCALE 1 : 5

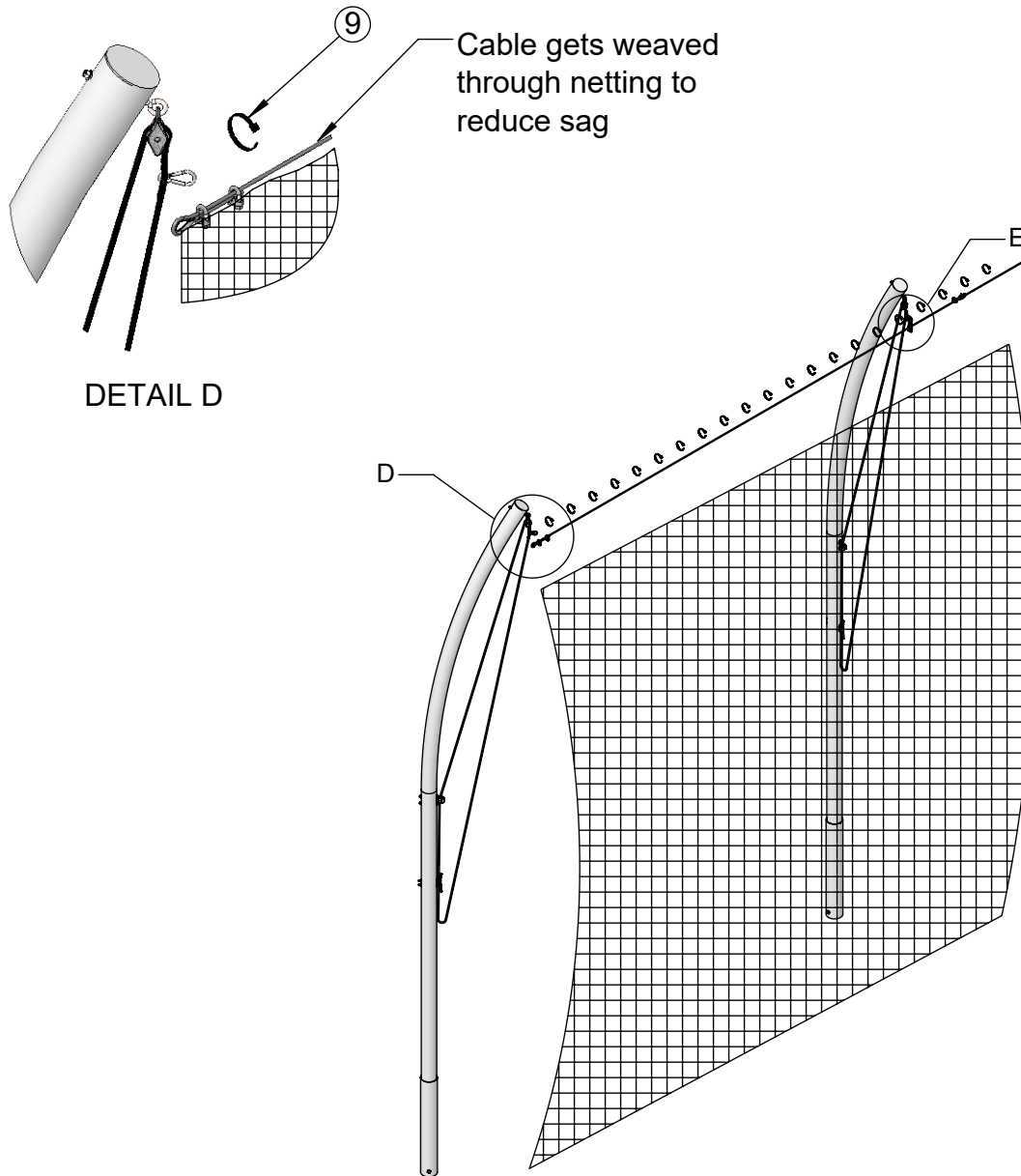
Note: Stop the tensioned cable one tampin short of the end pole where Players will enter.



Aluminum Athletic Equipment
1000 Enterprise Drive, Royersford, PA 19468
Toll Free: (800) 523-5471 Fax: (610) 825-2378
www.AAEsports.com

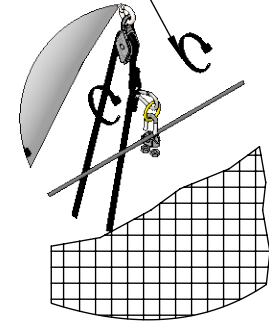
DESCRIPTION:		
Tension Cable Layout		
NOTE:		
55' - 0"		
MODEL:	CATEGORY:	DATE:
BT-141455	CUSTOMER	01/31/2018
DWN. BY:	CAD FILE:	DWG. NO.:
CED	BT-141455 CAD Packet	BT-141455-C-004

Batting Tunnel Cable




DETAIL D

Use cable ties every 1 to 2 feet to secure net to cable



DETAIL E

 Aluminum Athletic Equipment 1000 Enterprise Drive, Royersford, PA 19468 Toll Free: (800) 523-5471 Fax: (610) 825-2378 www.AAEsports.com		
DESCRIPTION:		
Batting Tunnel Cable		
NOTE:		
Cable Diagram		
MODEL:	CATEGORY:	DATE:
BT-141455	CUSTOMER	01/31/2018
DWN. BY:	CAD FILE:	DWG. NO.:
CED	BT-141455 CAD Packet	BT-141455-C-005

BT-141455
14' H x 14' W x 55' L BATTING TUNNEL
PARTS LIST

Pt#	Item	Description	Qty.
1	Upright	4.00"o.d. x .125 x 17'6" aluminum tube, 24" arc offset, 6061T6	8
2	Main Net	1-3/4" square x 14' high x 14' wide x 55' long poly net	1
3A	Ground Sleeve	4.35" o.d. x .100 x 30" 6061T6 aluminum tube, with cast aluminum cap	8
3B	Stopbolt	1/2"- 13 x 5" steel hex bolt, plated	8
3C	Stopbolt Nut	1/2"- 13 steel hex nut, plated	8
4A	Hoisting Rope	5/16" polypropylene black braided rope, 26' long	8
4B	Eyebolt	5/16"-18 x 6" steel eyebolt, S.S.	8
4C	Washer	5/16" washer, S.S.	8
4D	Nut	5/16"-18 steel nylon lock nut, S.S.	8
4E	Swivel Pulley	#3-5 fast eye, galvanized steel, swivel pulley.	8
4F	Pulley	#18-1 deck block galvanized steel pulley	8
4G	Pulley bolt	1/4"- 20 x 4-1/2" hex bolt, S.S.	16
4H	Pear Clip (Main Net)	1/4" Pear Clip, S.S.	16
4I	O-Ring	1-1/4" dia. Brass O-Ring	8
4J	Cable Clamp	1/4" cable clamp, galvanized steel	8
5A	Cleat	6" galvanized steel cleat	8
5B	Cleat bolt	1/4"- 20 x 5-1/2" hex bolt, S.S.	16
5C	Washer	1/4" washer, S.S.	32
5D	Nut	1/4"-20 steel nylon lock nut, S.S.	32
5E	Nut	1/4"-20 steel acorn nut, S.S.	16
6A	Eyebolt	3/8"-16 x 2-1/2" steel eyebolt, S.S.	8
6B	Concrete Anchor	3/8"-16 tampin insert, P25T	8
7	Main Net Tension Cables	3/16" vinyl coated galvanized cable assembly (55' long)	4
8	Tensioner Kit	Galvanized 5/8" Tensioner, cable clamps, cable loop, shackles	2
9	Wire Ties	Black polypropylene net ties	100

FOR TECHNICAL ASSISTANCE, CALL 1-800-523-5471

K:\AAE Data\Product Instructions & Parts Lists\BT-141455\BT-141455 Parts List.doc
 Copyright © 2001 Aluminum Athletic Equipment Co.


BT-141455
14'H x 14'W x 55'L BATTING TUNNEL
LAYOUT AND INSTALLATION INSTRUCTIONS

LAYOUT: Refer to Drawing No. BT-141455-C-002

INSTALLATION:

Step No. 1
Placing Ground Sleeves

Drill or dig 15"-18" diameter holes a minimum of 36" deep **(Consult local building codes for concrete depth and drainage requirements.)** at each Ground Sleeve Location. Fill the bottom of each hole with approximately 6" of crushed stone, so the depth from ground level to the top of the stone is 30". Insert 30" aluminum ground sleeves (Item No. 3A) "bolt side" down. Make sure the ground sleeves are flush with the ground, centered, leveled (individually, as well as with each other), and plumb. Also, rotate the ground sleeves so that the two (2) grooves (Installation notches) on top of the ground sleeve are aligned correctly - See Drawing No. BT-141455-C-002 for details.

 **IMPORTANT NOTE:** It is extremely important that the Installation Notches on top of the ground sleeve are in proper alignment, so the keyslot in the main upright will lock the upright into its proper position when set into the ground sleeve.

Step No. 2
Setting Ground Sleeves

When all the ground sleeves are in the proper position and alignment, the concrete can be poured. **(Be sure not to get any concrete inside the ground sleeves!)** As the concrete cures, constantly check to see that the ground sleeves are flush with the ground, centered, plumb, and in the correct alignment.

Step No. 3
Drilling & Pouring Concrete Piers
See Drawing No. BT-141455-C-002

Drill or dig 6" diameter holes 10" deep (Consult local building codes for concrete depth and drainage requirements.) At each "tampin location". Fill void with concrete to a level 2" below ground level. While the concrete is still in a semi-pliable state, place the tampin insert (Item No. 6B) in the center of the pier so that the top of the insert is flush with the top level of the concrete. **(DO NOT get concrete inside the tampin insert!)** When concrete has hardened, thread 3/8"-16 eyebolt w/ attached Pear Clip (Item Nos. 6A & 4H) into inserts.

Step No. 4
Upright Assembly
See Drawing No.

Attach swivel pulley, w/ attached eyebolt, (Item Nos. 4E & 4B) to the top hole of the upright using a 5/16"-18 nylon lock nut (Item No. 4D). (If there are 2 holes present at the top of the upright, mount the pulley and eyebolt through the **top** hole.)

BT-141455
14'H x 14'W x 55'L BATTING TUNNEL
LAYOUT AND INSTALLATION INSTRUCTIONS

BT-141455-C-003 Attach a fixed pulley (Item No. 4F) through the middle set of holes using 1/4"-20 x 4-1/2" hex bolt (Item No. 4G) and 1/4"-20 nylon lock nuts (Item No. 5D).

 Attach one cleat (Item No. 5A) through the lower set of holes using 1/4"-20 x 5-1/2" hex bolts (Item No. 5B) and 1/4"-20 nylon lock nuts (Item No. 5D). Cap threads with 1/4" -20 acorn nuts (Item No. 5E).

 Thread hoisting rope (Item No. 4A) with attached pear clip (Item No. 4H) through top pulley, middle pulley, and secure to cleat.

 After concrete cures, insert assembled upright into ground sleeve. Repeat procedures to assemble other uprights.

Step No. 5 Lay 55' long cables out length-wise (x2). Attach pre-made loop end
Installing Bottom thimble with anchor shackle to corner tampin eyebolt on ground.
Tensioned Cables End cable a bay short on the corner where entrance is preferable
 (this will allow for net to be clipped on and off for easy entering.
 Position turnbuckle at one end and make up with thimble. Make
 sure to remove the cable coating (2' typical) with a box cutting
 knife *BE CAREFUL. Pull the cable around the thimble, which is
 attached to the corner eyebolt via an anchor shackle. Use cable
 clamps anchor shackles Tension all cables and clip cable at
 intermediate locations along the length.

(Ask AAE about the BT-EZ Batting Tunnel Entrance Zipper, which can be added to any batting tunnel net to create an opening in any location on the net.)

Step No. 6 Lower hoisting rope w/ attached pear clip and cable clamp (Item
Installing Main Nos. 4A, 4H, & 4J) to about 4 ft. above ground level. (Keep end of
Net rope secured to cleat so you don't lose the rope!). Layout the main
 net and attach the cable clamps at each post to the net, starting at
 the corners at one end and working down to the other end. Once
 all posts' hoisting ropes are attached, raise the net all the way and
 secure the end of the rope firmly and professionally to the cleat.
 (Consult former Navy personnel or handbook for proper method.)

Step No. 7 Start at the far end corner away from the chosen entrance side
Fasten Bottom of and zip tie bottom border of net every 6" (3-4 net square blocks). It
Net Border to may help to lower the net a foot from the top so not to create
Tensioned Bottom unwanted tension during this step. Once completed, clip zip tie
Cables ends and raise net fully.

BT-141455
14'H x 14'W x 55'L BATTING TUNNEL
LAYOUT AND INSTALLATION INSTRUCTIONS

FOR TECHNICAL ASSISTANCE, CALL 1-800-523-5471

K:\AAE Data\Product Instructions & Parts Lists\BT-141455\BT-141455 Installation Instructions.doc

Copyright © 2011 Aluminum Athletic Equipment Co.