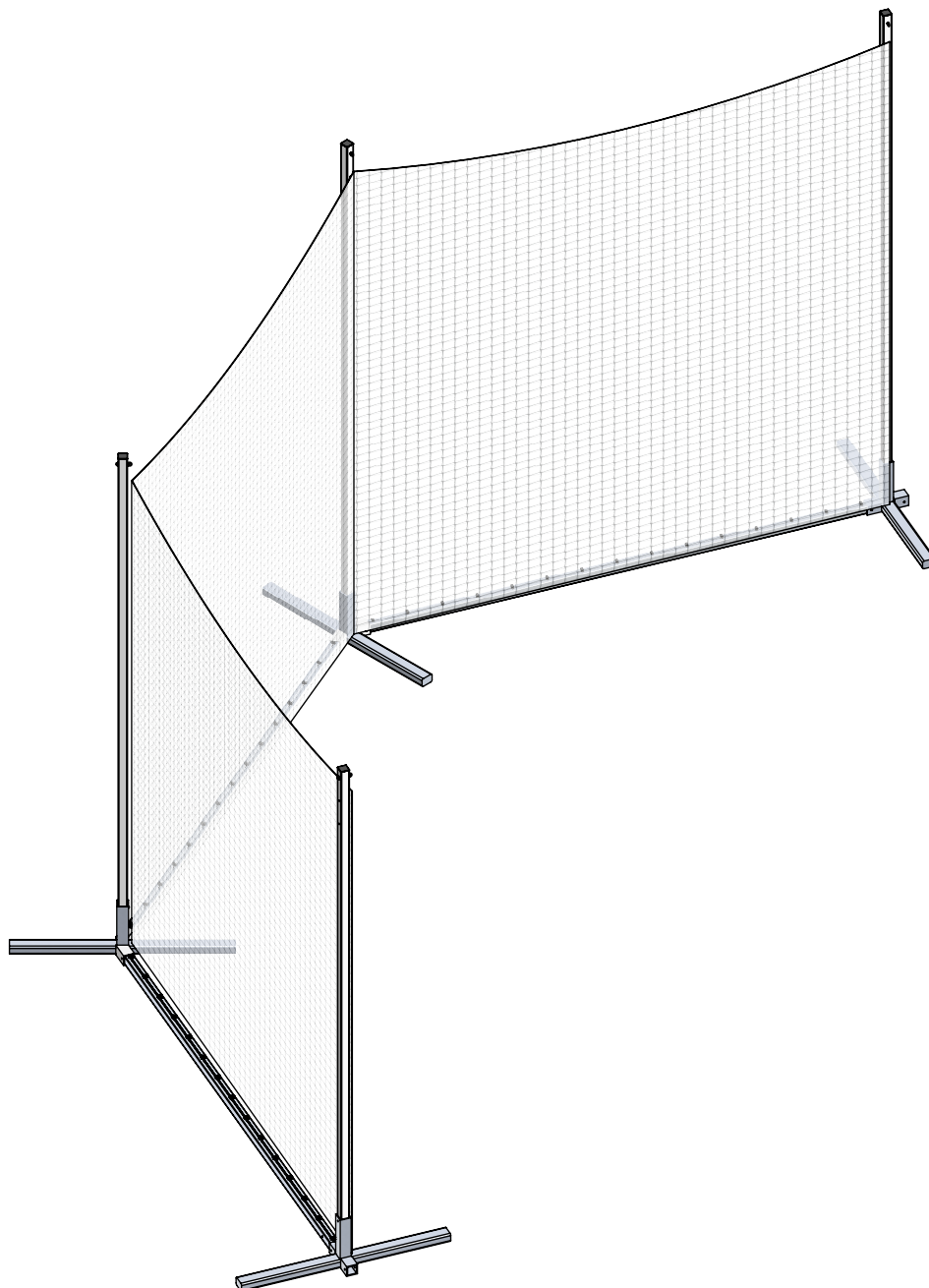


# PLB PORTABLE LACROSSE BACKSTOP



**Aluminum Athletic Equipment**  
1000 Enterprise Drive, Royersford, PA 19468  
Toll Free: (800) 523-5471 Fax: (610) 825-2378  
[www.AAEsports.com](http://www.AAEsports.com)

# PORTABLE LACROSSE BACKSTOP

## Specifications

Synthetic UV-treated netting  
1-1/2" sq. x 10' high x 30' long

Custom powder-coating  
available

Optional:  
Model No. VSZ  
Vinyl sandbag to provide  
additional stability  
(Specify yellow or white)

Angled bases allow for  
a 45° hexagonal layout  
to maximize stoppage and  
provide increased stability  
to the system

### PLB - Upright

2" sq. Aluminum upright

10'-8 3/8"

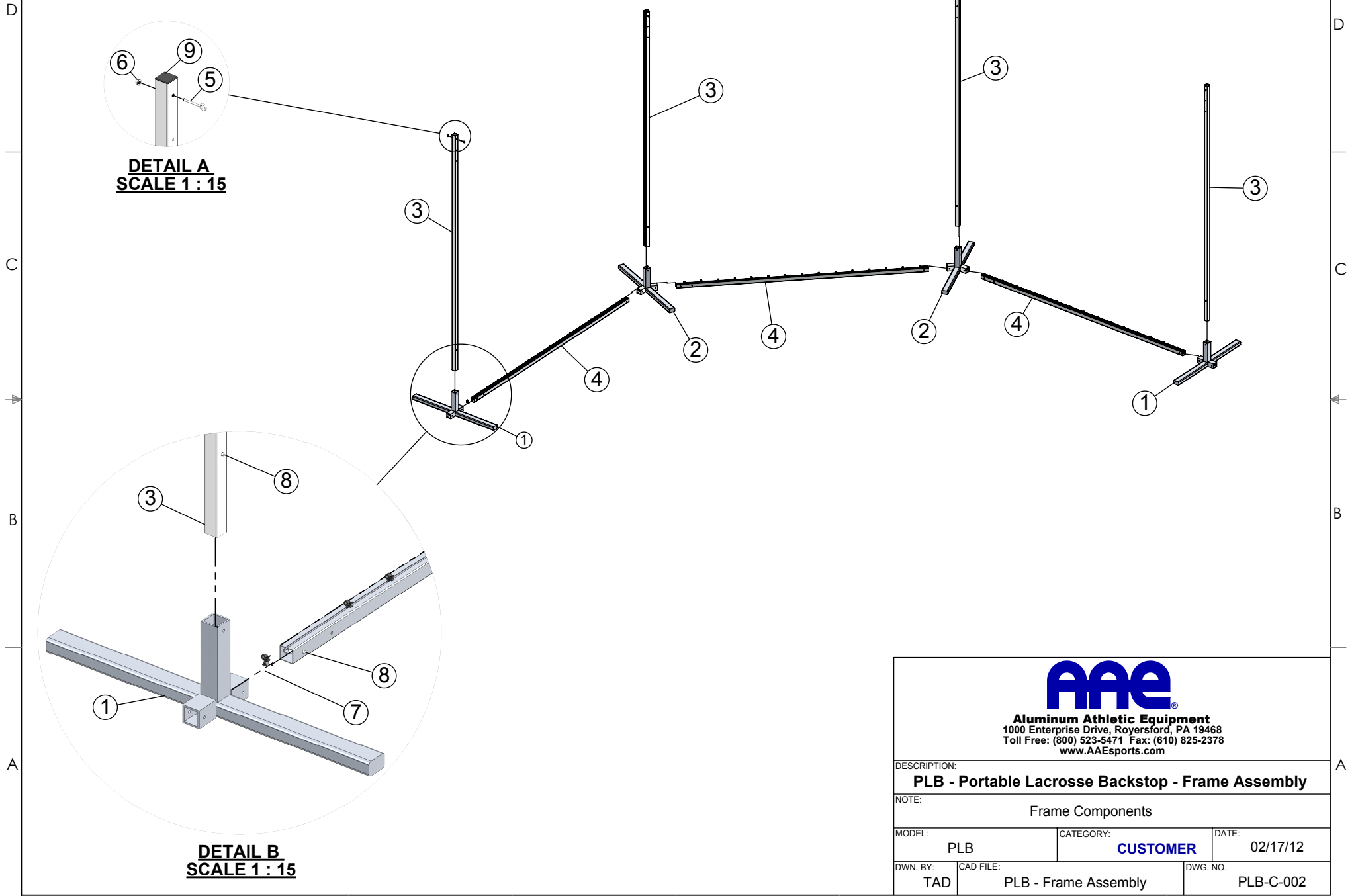
Aluminum self-standing  
base



**Aluminum Athletic Equipment**  
1000 Enterprise Drive, Royersford, PA 19468  
Toll Free: (800) 523-5471 Fax: (610) 825-2378  
[www.AAEsports.com](http://www.AAEsports.com)

DESCRIPTION:		
<b>PLB - Portable Lacrosse Backstop</b>		
NOTE: Specifications		
MODEL:	CATEGORY:	DATE:
PLB	<b>CUSTOMER</b>	2/27/2018
DWN. BY:	CAD FILE:	DWG. NO.:
TAD	PLB Specifications	PLB-C-001

# PLB - Portable Lacrosse Backstop Frame Assembly



**DETAIL A**  
**SCALE 1 : 15**

**DETAIL B**  
**SCALE 1 : 15**



**Aluminum Athletic Equipment**  
1000 Enterprise Drive, Royersford, PA 19468  
Toll Free: (800) 523-5471 Fax: (610) 825-2378  
[www.AAEsports.com](http://www.AAEsports.com)

DESCRIPTION:  
**PLB - Portable Lacrosse Backstop - Frame Assembly**

NOTE: Frame Components

MODEL: PLB	CATEGORY: <b>CUSTOMER</b>	DATE: 02/17/12
---------------	------------------------------	-------------------

DWN. BY: TAD	CAD FILE: PLB - Frame Assembly	DWG. NO. PLB-C-002
-----------------	-----------------------------------	-----------------------

**PLB  
PORTABLE LACROSSE BACKSTOP  
PARTS LIST**

Pt#	Item	Description	Qty.
1	Upright Base	Aluminum self-standing base with welded aluminum pockets	2
2	Angled Upright Base	Aluminum self-standing base with welded angled aluminum pockets	2
3	Upright Insert	2" sq. x 128" long aluminum tube	4
4	Ground bar	2" sq. x 120" long aluminum tube	3
5	Eyebolt	5/16" x 2" eyebolt	4
6	Hex Nut	5/16"-18 Hex Nut	4
7	Molded Net Clip	Molded clip to secure net	45
8	Locking Spring Pin		10
9	Cap	2" x 2" Plastic cap	4
10	Main Net	1-1/2" sq. x 10' H x 30' L Synthetic UV-treated netting	1

**FOR TECHNICAL ASSISTANCE, CALL 1-800-523-5471**

