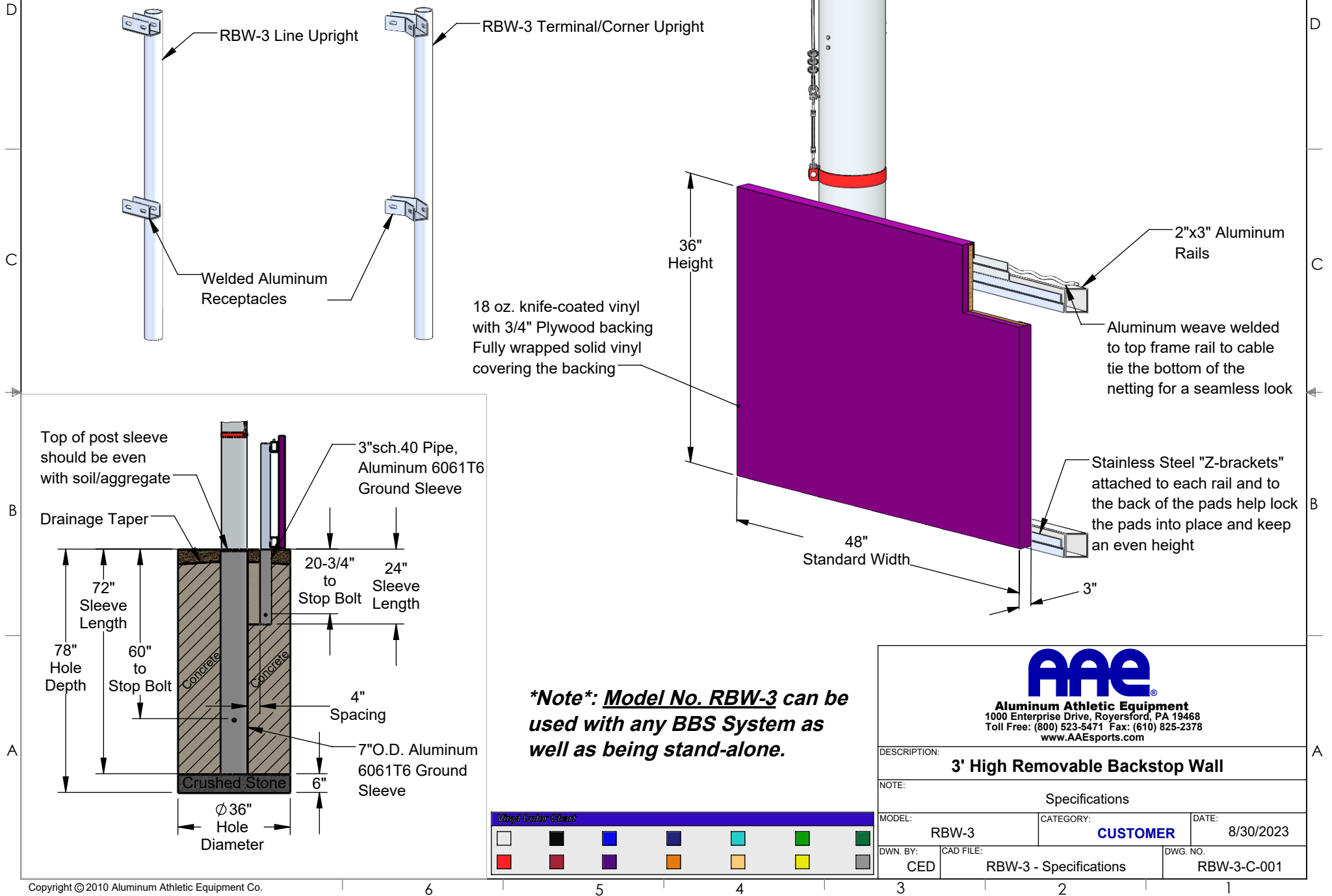


# RBW-3 - 3' High Removable Backstop Wall

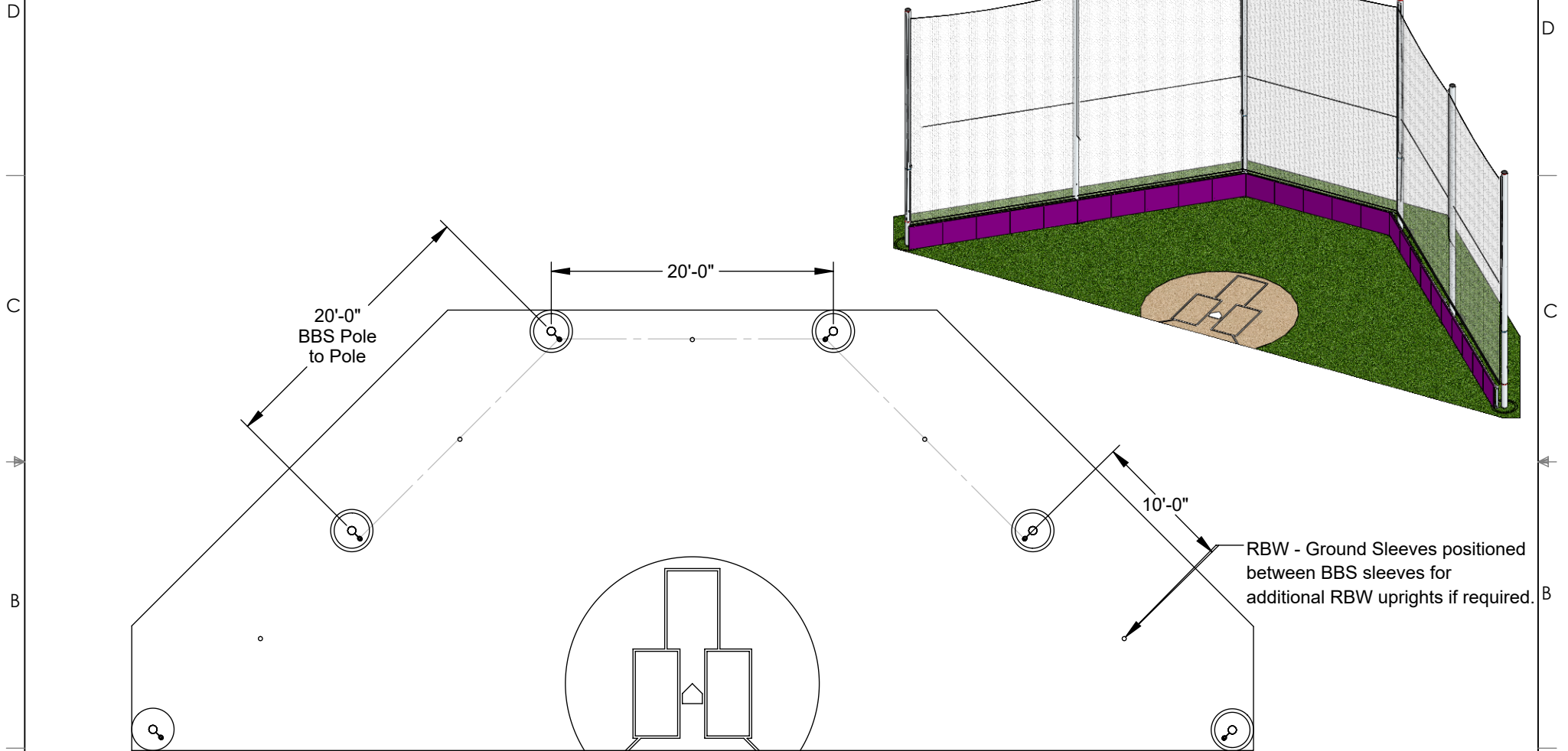
## Specifications



# RBW-3 - 3' High Removable Backstop Wall

## Layout Specifications

RBW-3 Shown with a BBS-30 Model



**Aluminum Athletic Equipment**  
 1000 Enterprise Drive, Royersford, PA 19468  
 Toll Free: (800) 523-5471 Fax: (610) 825-2378  
[www.AAEsports.com](http://www.AAEsports.com)

DESCRIPTION:		
<b>RBW-3 - 3' High Removable Backstop Wall</b>		
NOTE:		
Layout Specifications		
MODEL:	CATEGORY:	DATE:
RBW-3	<b>CUSTOMER</b>	11/11/2020
DWN. BY:	CAD FILE:	DWG. NO.
CED	RBW-3 - Specifications	RBW-3-C-002