

**AAE Model: SC-14**  
(shown with Optional Barrier Net)

# SC-14 - Shot Cage

## Specifications

**Includes:**

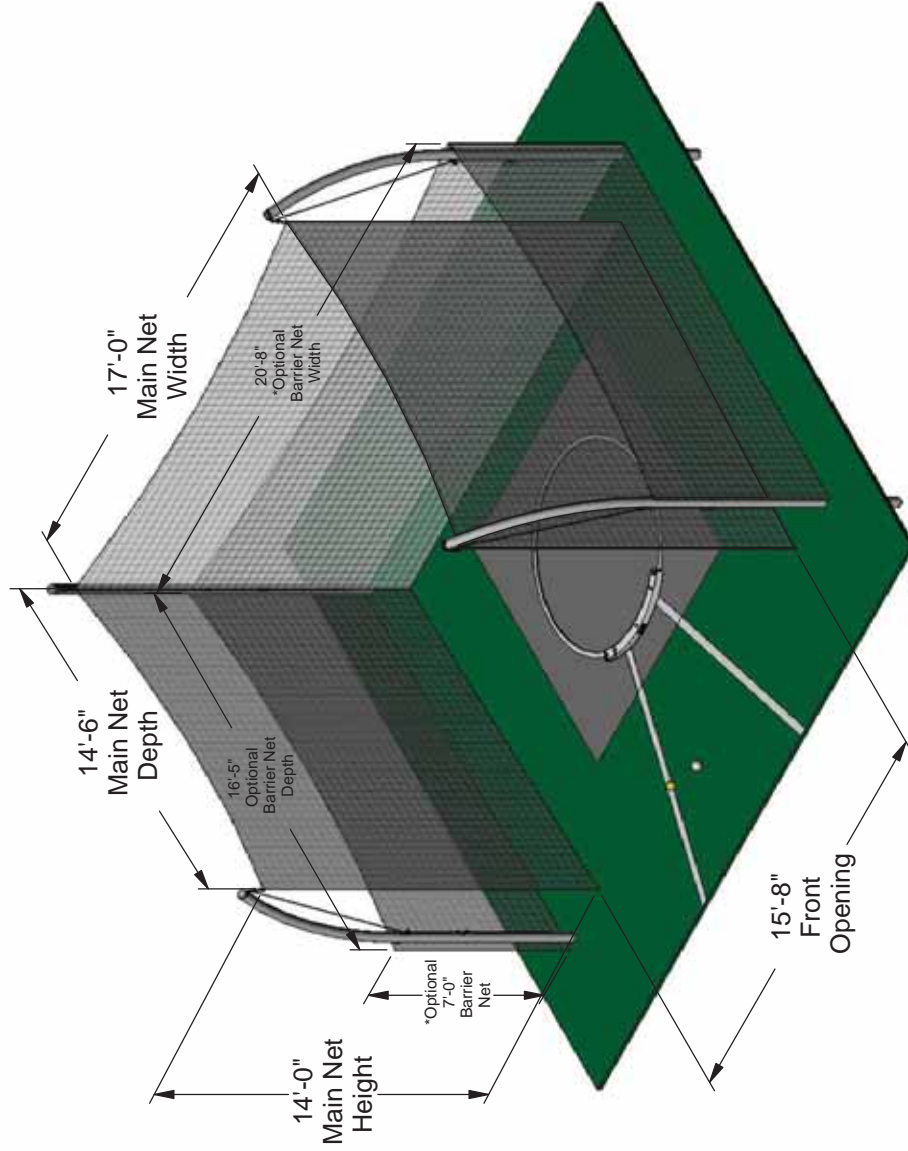
- Aluminum Posts (4)  
Ø 4" x .125" wall x 17'-6" overall length
- Aluminum Groundsleeves (4)  
Ø 4.35" x .125" wall x 30" long with Stainless Steel Stopbolts
- Main Net 14' High x 46' Long #820 - 4.75 mil twine, 2-1/2" sq. (65mm) knotless high tenacity polypropylene net with 1/4" MFP Rope Border B-Treated 3/16" clear coated galvanized cable
- Concrete Tampins, galvanized (4) with Eyebolts
- All Stainless Steel/Galvanized/Brass Hardware

**Includes:**

- Cable Clamp Assemblies, Dog Snaps, O-Rings, Pulleys (Top & Side), Rope Cleats (includes nylon rope), and Eyebolts.

**\*Optional:**

- Model No. BN-SC-14 Barrier Net 7'-0" High x 53'-6" Long #820 - 4.75 mil twine, 2-1/2" sq. (65mm) knotless high tenacity polypropylene net with 1/4" MFP Rope Border B-Treated 3/16" clear coated galvanized cable



Aluminum Athletic Equipment  
1000 Emprise Drive, Royersford, PA 19468  
Toll Free: (800) 523-5471 Phone: (610) 825-6565  
www.myaee.com

DESCRIPTION:

**SC-14 - Shot Cage - Specifications**

NOTE:

14' High Shot Cage

CATEGORY:

CUSTOMER

DATE:

09/05/03

11/8/04

DWG. NO.

SC-14-C-001

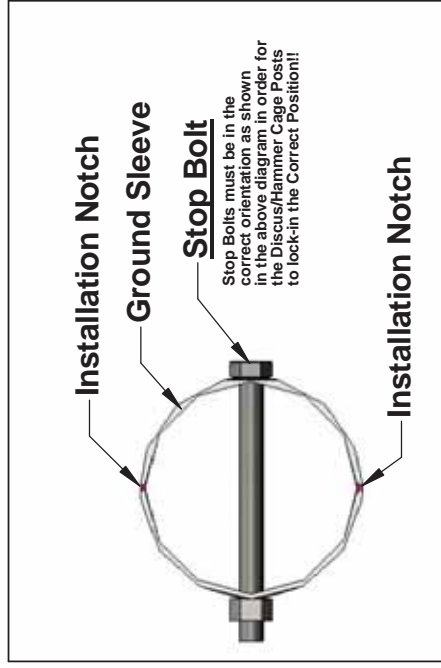
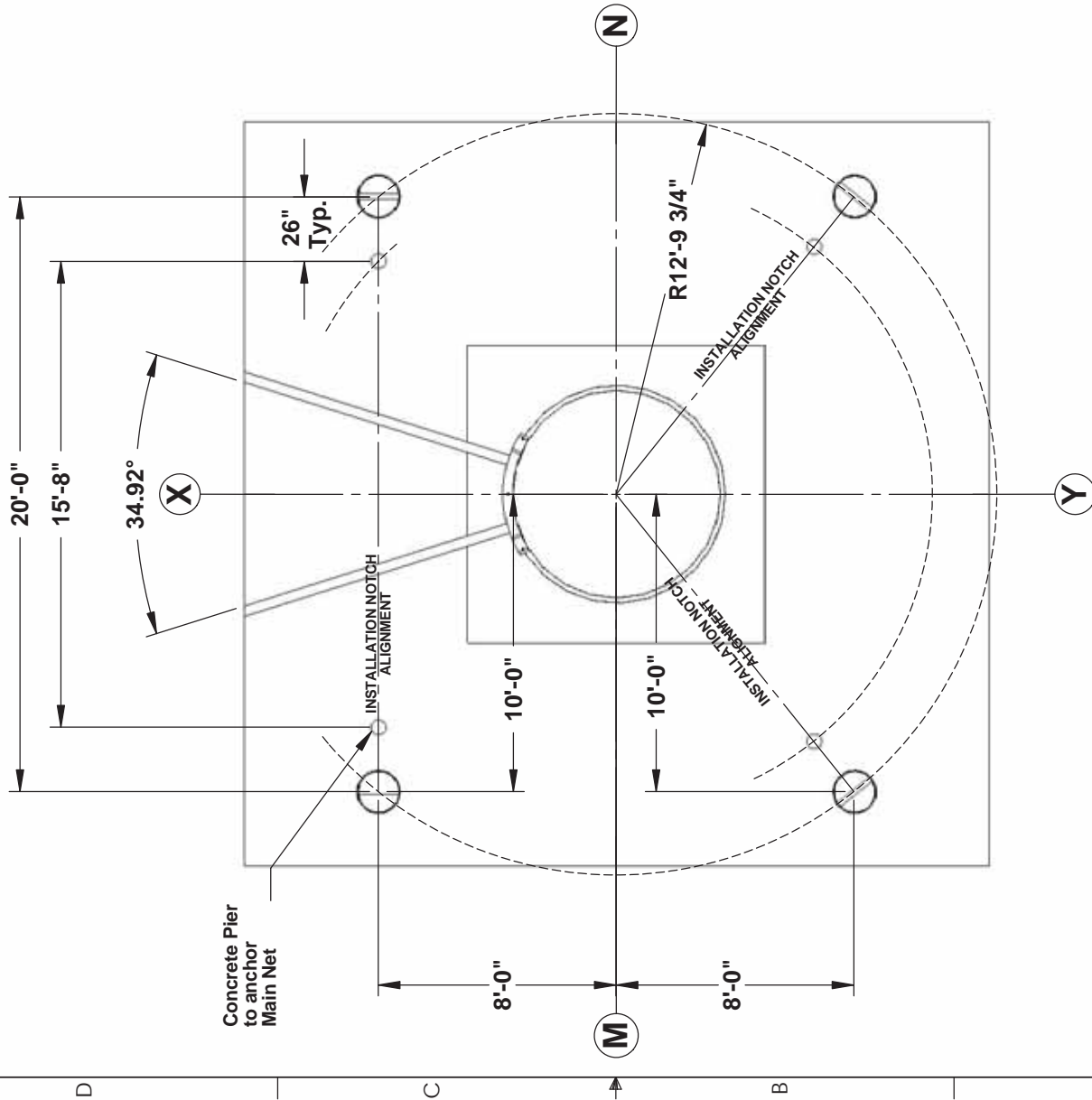
CAD FILE:

SC-14 - Specifications

TAD

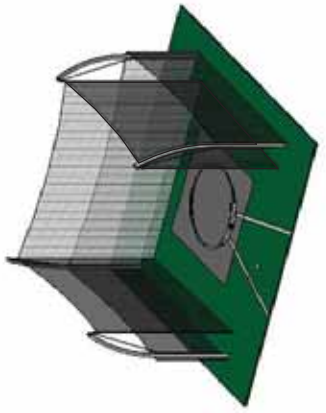
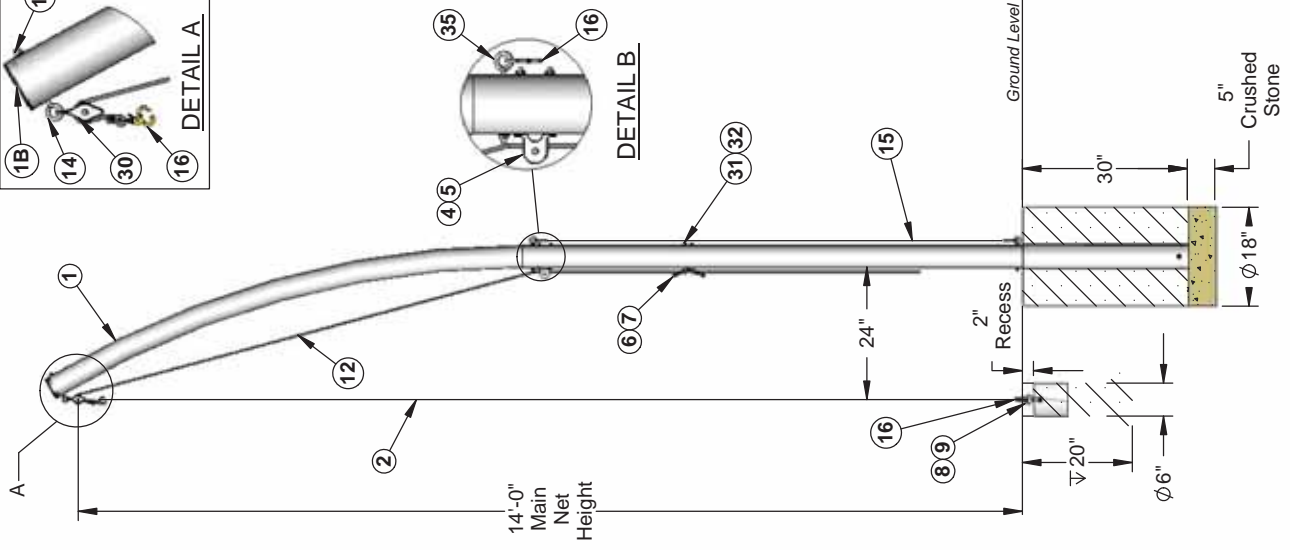
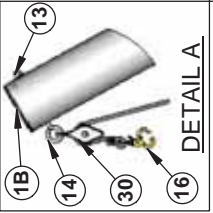
SC-14-C-001

# SC-14 - Shot Cage Ground Sleeve Layout

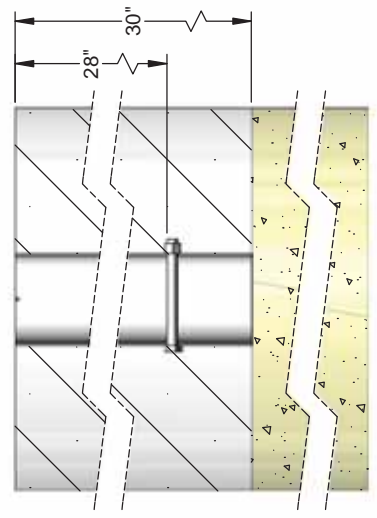
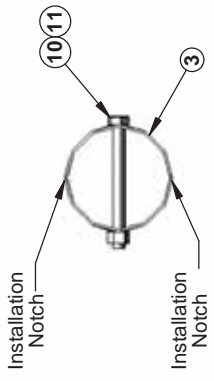


DESCRIPTION:		SC-14 - Shot Cage - Layout	
NOTE:		14' High Shot Cage	
MODEL:	SC-14	CATEGORY:	CUSTOMER
DWN BY:	TAD	CAD FILE:	SC-14 - Layout
		DATE:	09/05/03
		DWG. NO.:	11/8004
		SC-14-C-002	

# SC-14 Shot Cage Installation/Upright Specifications



## SC-14 Ground Sleeve



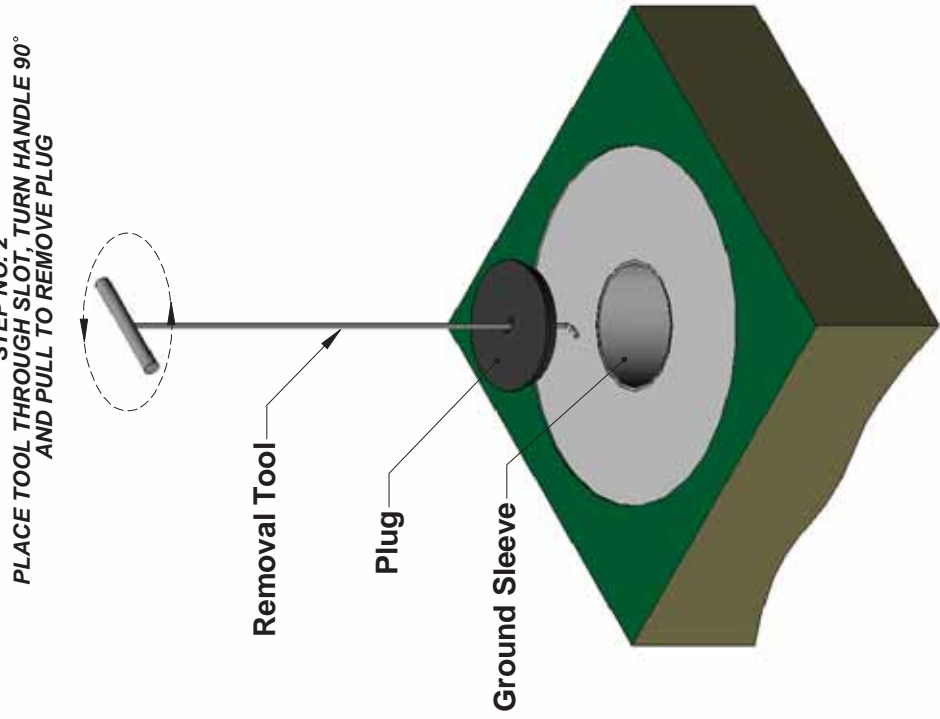
**AAE**  
 Aluminum Athletic Equipment  
 1000 Enterprise Drive, Royersford, PA 19468  
 Toll Free: (800) 523-5471 Phone: (610) 822-6565  
 www.aaeintl.com

DESCRIPTION: SC-14 - Installation/Upright Specifications	
NOTE:	Shot Cage
MODEL: SC-14	CATEGORY: CUSTOMER
DWN BY: TAD	DATE: 09/05/03
CAD FILE:	DWG NO: SC-14-C-003
Shot Cage Packet	

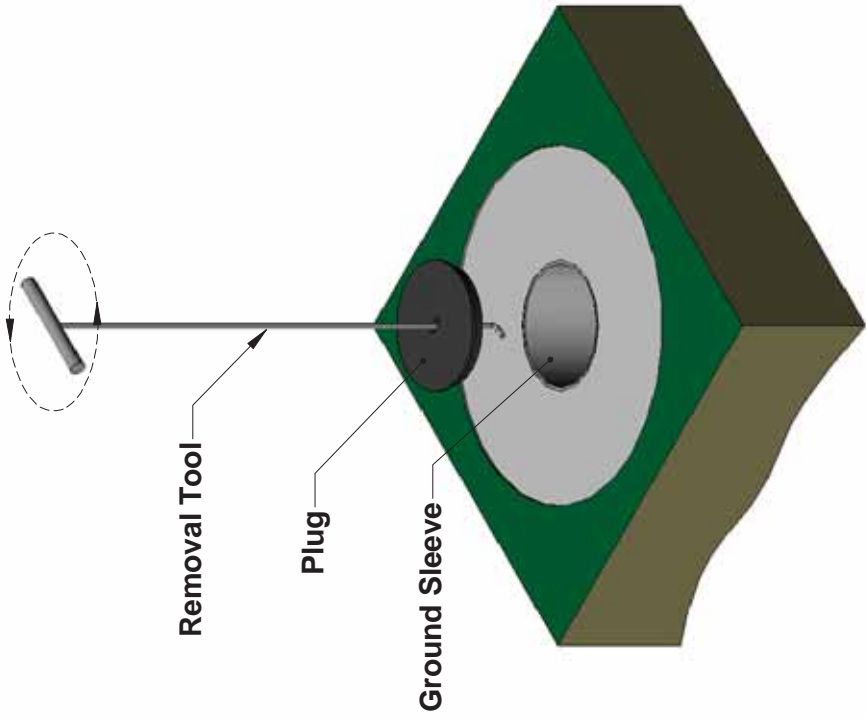
# Ground Sleeve Plug with Removal Tool

## Instructions

8 7 6 5 4 3 2 1



**\*STEP NO. 2  
PLACE TOOL THROUGH SLOT, TURN HANDLE 90°  
AND PULL TO REMOVE PLUG**



DESCRIPTION: <b>Ground Sleeve Plug with Removal Tool</b>	
NOTE:	
MODEL:	CATEGORY: <b>CUSTOMER</b>
DWG. BY: <b>TAD</b>	DATE: <b>12/28/04</b>
DWG. NO. <b>GSRT-C-001</b>	

**SC-14**  
**SHOT CAGE – 14' HIGH**  
**LAYOUT AND INSTALLATION INSTRUCTIONS**

---

**LAYOUT** - (Reference Drawing No. SC-14-C-002 for details)

- Step No. 1            Using masonry string, establish perpendicular lines "MN" and "XY", which intersect at point "O", the center of the discus circle.
- Step No. 2            With point "O" as the center, draw a semi-circle with a radius of 12'-9 3/4" (3.90m).
- Step No. 3            Establish lines 8'-0" away, and parallel to, line "XY" on both sides. Locate points "2" & "3" by their intersection with the scribed radius.
- Step No. 4            Establish points "1" & "4", which are 12'-9 3/4" (3.90m) from point "O" on line "MN". (Points "1" & "4" should be 13'-2" from points "2" & "3" respectively.)

**NOTE: Points "1" thru "4" are the location of the Center of the ground sleeves to be installed.**

**INSTALLATION**

- Step No. 1  
Placing Ground  
Sleeves            Drill or dig 15" - 18" diameter holes a minimum of 38" deep **(Consult local building codes for concrete depth and drainage requirements.)** at points "1" thru "4". Fill the bottom of each hole with approximately 8" of crushed stone, so the depth from ground level to the top of the stone is 30". Insert the upright ground sleeves (Item No. 3) at points "1" thru "4" ("bolt side" down). Make sure the ground sleeves are flush with the ground, centered, leveled (individually, as well as with each other), and plumb. Also, rotate the ground sleeves so that the two (2) grooves (Installation notches) on top of the ground sleeve are aligned correctly - See "Installation Notch Alignment" on Drawing. No. SC-14-C-002 for details. A mason's string or straight edge may be used to aid in the aligning process.

**NOTE: It is extremely important that the Installation Notches on top of the ground sleeve are in proper alignment, so the key slot in the main upright will lock the upright into its proper position when set into the ground sleeve.**

- Step No. 2  
Setting Ground  
Sleeves            When all the ground sleeves are in the proper position and alignment, the concrete can be poured. **(Be sure not to get any concrete inside the ground sleeves!)** As the concrete cures, constantly check to see that the ground sleeves are flush with the ground, centered, plumb, and in the correct alignment.

**SC-14**  
**SHOT CAGE – 14' HIGH**  
**LAYOUT AND INSTALLATION INSTRUCTIONS**

---

Step No. 3  
Drilling & Pouring  
concrete piers

Drill or dig 5" - 6" diameter holes 18" deep (Consult local building codes for concrete depth and drainage requirements.) at points "A" thru "F". Fill void with concrete to a level 2" below ground level, or if pouring a pad keep flush. While the concrete is still in a semi-pliable state, place the tampin insert (Item No. 15) in the center of the pier so that the top of the insert is flush with the top level of the concrete. **(DO NOT get concrete inside the tampin insert!)** When concrete has hardened, thread 3/8"-16 eyebolt w/ attached Hook Snap (Item Nos.11 & 14) into inserts.

Step No. 4  
Upright Assembly

**See Drawing No.**  
**SC-14-C-003**

Attach swivel pulley, w/ attached eyebolt, (Item Nos. 18 & 19) to the top hole of the upright using a 5/16"-18 hex nut (Item # 20). (If there are 2 holes present at the top of the upright, mount the pulley and eyebolt through the **top** hole.) Attach a fixed pulley (Item no. 4) through the middle set of holes using 1/4"-20 x 4-1/2" FH machine screws (Item No. 5) and 1/4"-20 hex nuts (Item No. 16). Attach one cleat (Item No. 6) through the lower set of holes using 1/4"-20 x 5-1/2" FH machine screws (Item No. 7) and 1/4"-20 hex nuts (Item No. 16). Cap threads with 1/4" -20 acorn nuts (Item No. 17). Thread hoisting rope (Item No. 10) with attached hook snap (Item No. 11) through top pulley, middle pulley, and secure to cleat. After concrete cures, slowly lower assembled upright into ground sleeve. Repeat procedures to assemble other five uprights.

Step No. 5  
Hanging Main Net

**See Drawing No.**  
**SC-14-C-003**

Lower hoisting rope w/ attached swivel snap (Item Nos. 10 & 11) to about 4 ft. above ground level. (Keep end of rope secured to cleat so you don't lose the rope!) Layout the main net and attach the swivel snap on the end of the hoisting rope to the framing rope on the top border of the net. (It is best to find the top center of the net first, attach the hook snaps at poles #2 & 3 at the appropriate distance, and then work your way out to both ends.) After the entire net is snapped into position, raise the net all the way by the hoisting rope and secure the end of the rope firmly and professionally to the cleat. (Consult former Navy personnel or Scout for proper method.)

\*Barrier Net  
(Optional)

Screw in two (2) eyebolts with attached Hook Snaps (Item Nos. 11 & 12) into threaded inserts located on the rear of each main upright. Layout barrier net, and attach frame of net to hook snaps. (Any excess net may be wrapped around and laced to the upright.)

**SC-14  
SHOT CAGE – 14' HIGH  
LAYOUT AND INSTALLATION INSTRUCTIONS**

---

**FOR TECHNICAL ASSISTANCE, CALL 1-800-523-5471**

K:\AAE Data\PDF Files\Z-Product Instructions & Parts Lists\Track & Field\SC-14\SC-14 Assembly Instructions.doc  
Copyright © 2000 Aluminum Athletic Equipment Co.