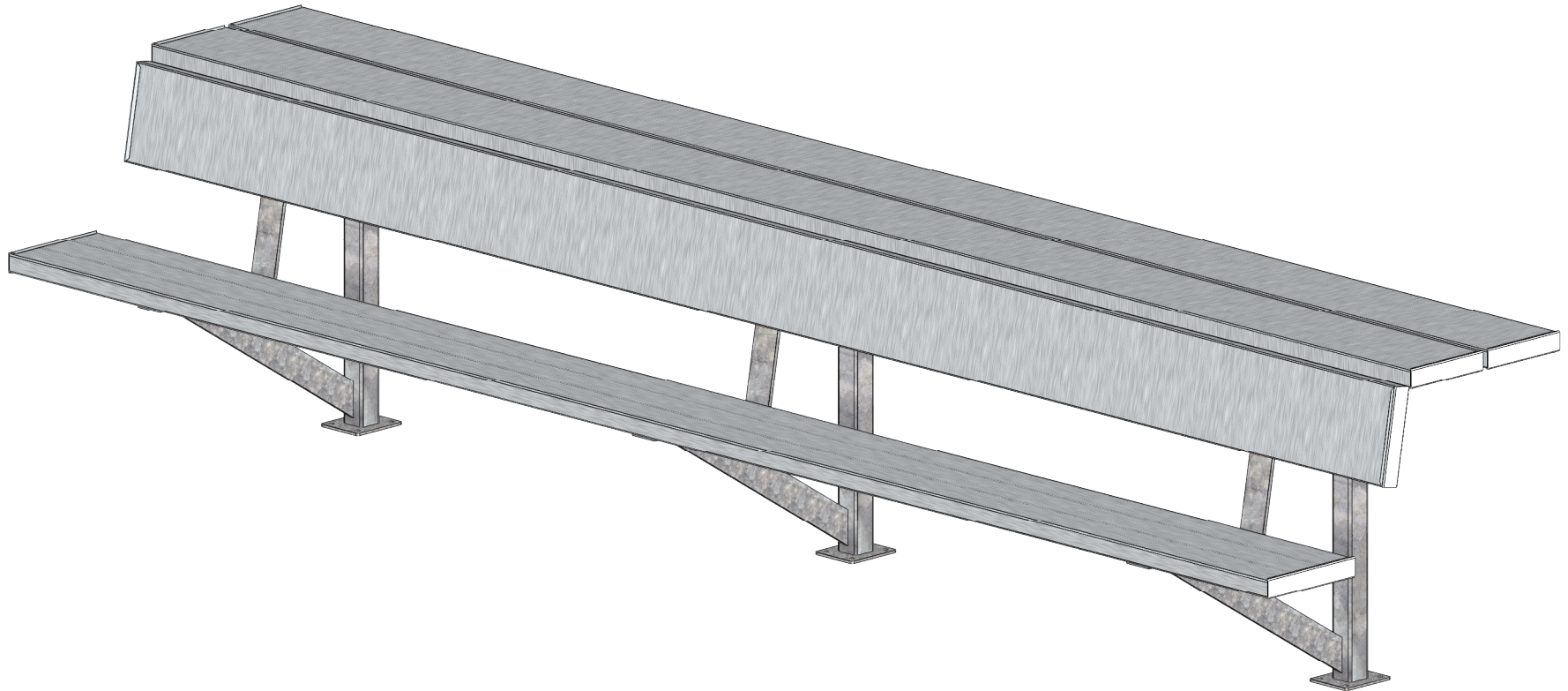
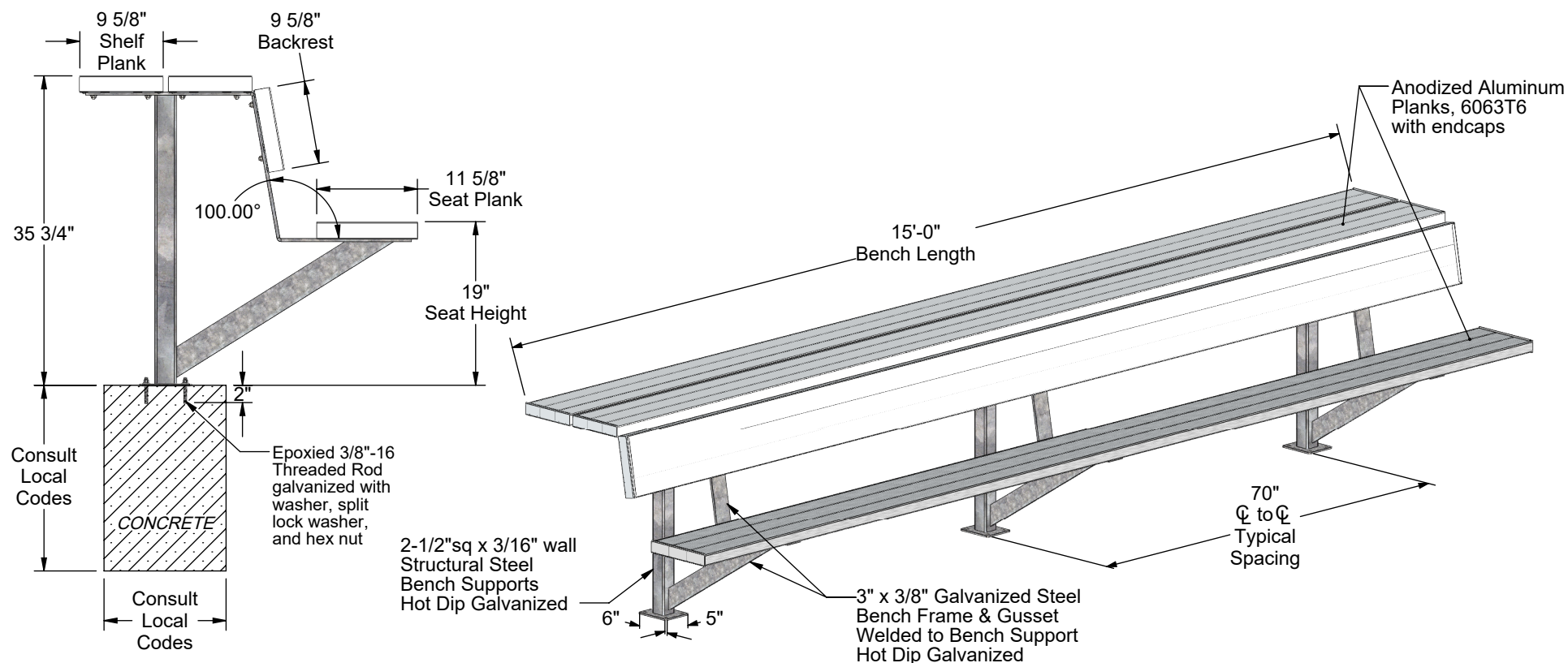


AAE Model No. TB-15B/S-SP
15'-0" Semi-Permanent Team Bench with Backrest & Shelf



Aluminum Athletic Equipment
1000 Enterprise Drive, Royersford, PA 19468
Toll Free: (800) 523-5471 Fax: (610) 825-2378
www.AAEsports.com

Specifications



Material Specifications

Materials: Anodized Aluminum, 6063T6
Galvanized Steel Tube, 2-1/2"sq x 3/16" wall
Galvanized Steel, 3/8" x 3" HRS
Aluminum & Stainless Steel Hardware
Concrete

Overall Weight: 235 lbs.
Overall Size: 3' high x 3'-3" deep x 15'-0" long

AAE Warranty Standard



Aluminum Athletic Equipment
1000 Enterprise Drive, Royersford, PA 19468
Toll Free: (800) 523-5471 Fax: (610) 825-2378
www.AAEsports.com

DESCRIPTION:

TB-15B/S-SP - Specifications

NOTE:

15'-0" Semi-Permanent Team Bench with Backrest & Shelf

MODEL:

TB-15B/S-SP

CATEGORY:

CUSTOMER

DATE:

07/11/2025

DWN. BY:

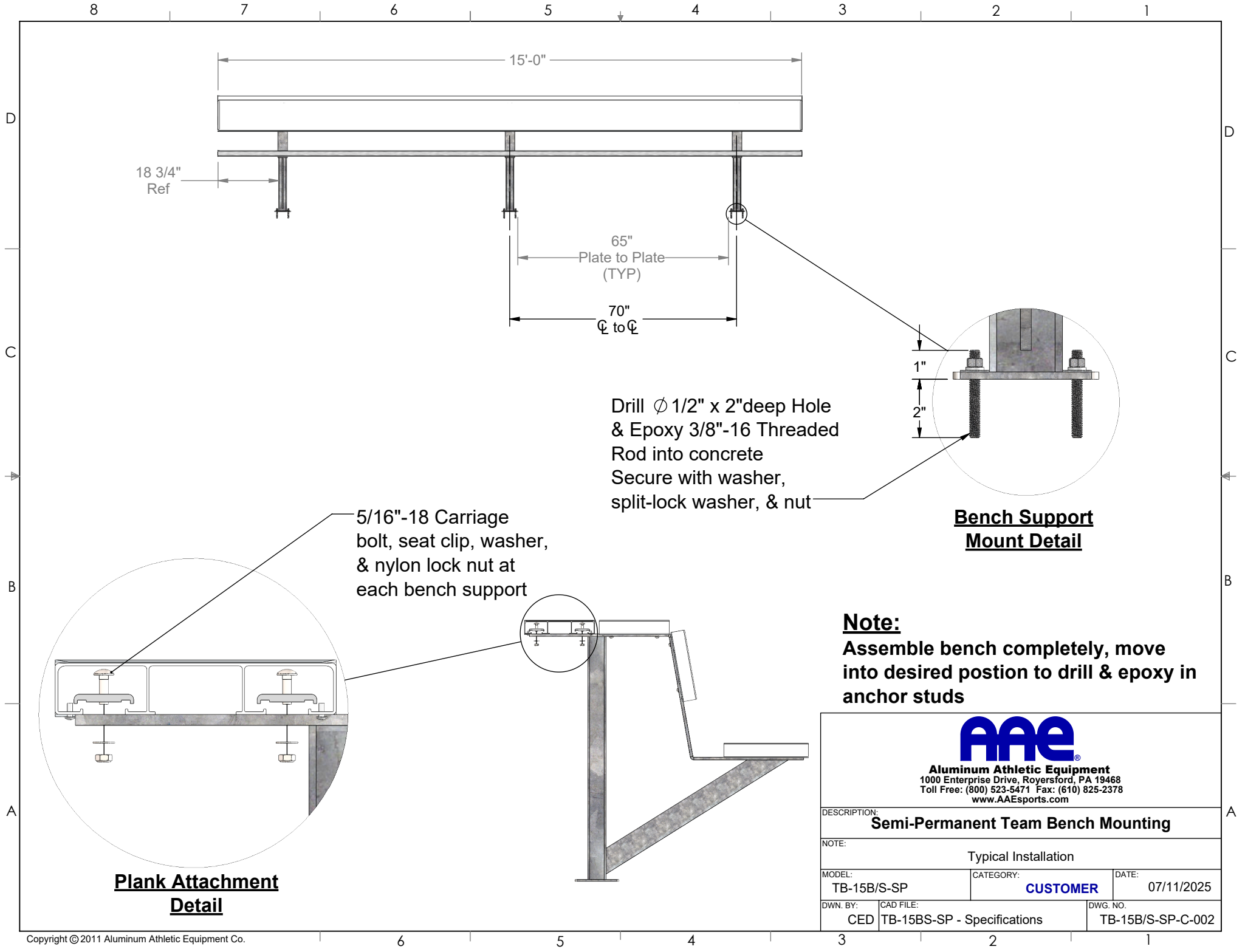
CAD FILE:

CED

TB-15BS-SP - Specifications

	DWG. NO.	

TR-15B/S-SP-C-001



Note:

Assemble bench completely, move into desired position to drill & epoxy in anchor studs



Aluminum Athletic Equipment
1000 Enterprise Drive, Royersford, PA 19468
Toll Free: (800) 523-5471 Fax: (610) 825-2378
www.AAEsports.com

DESCRIPTION: Semi-Permanent Team Bench Mounting		
NOTE: Typical Installation		
MODEL: TB-15B/S-SP	CATEGORY: CUSTOMER	DATE: 07/11/2025
DWN. BY: CED	CAD FILE: TB-15BS-SP - Specifications	DWG. NO. TB-15B/S-SP-C-002