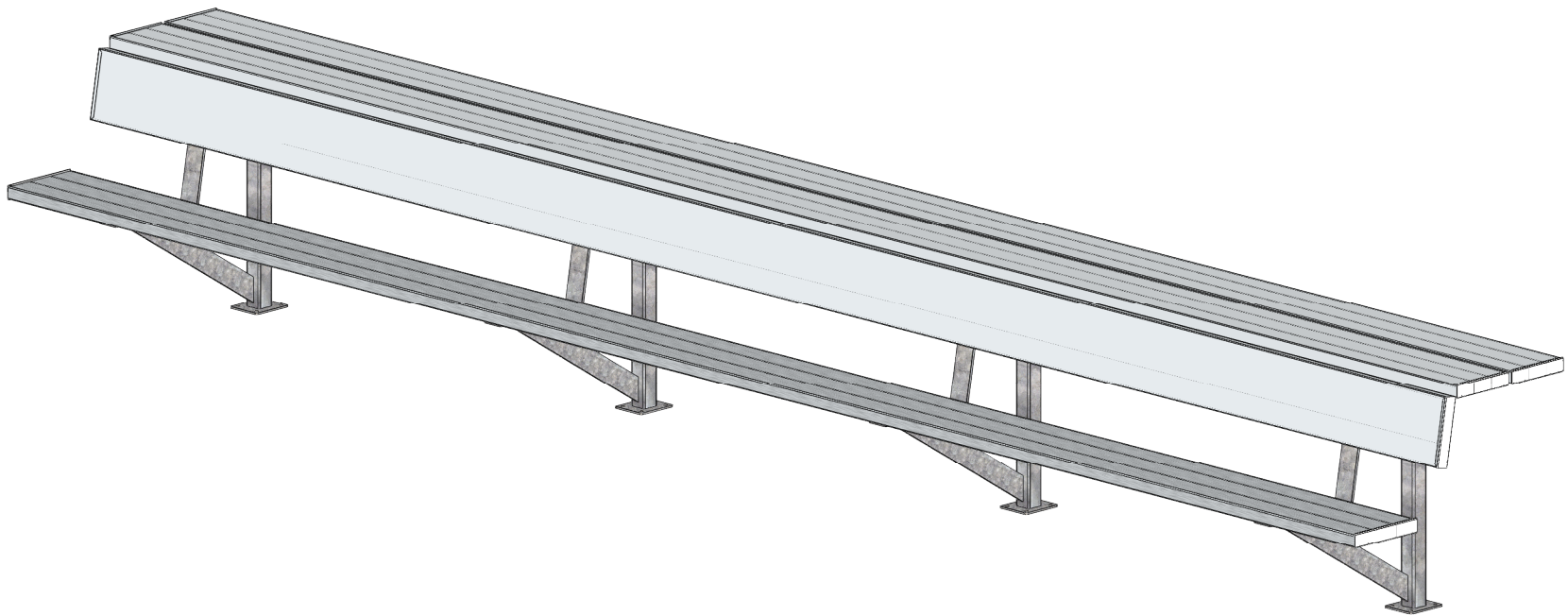


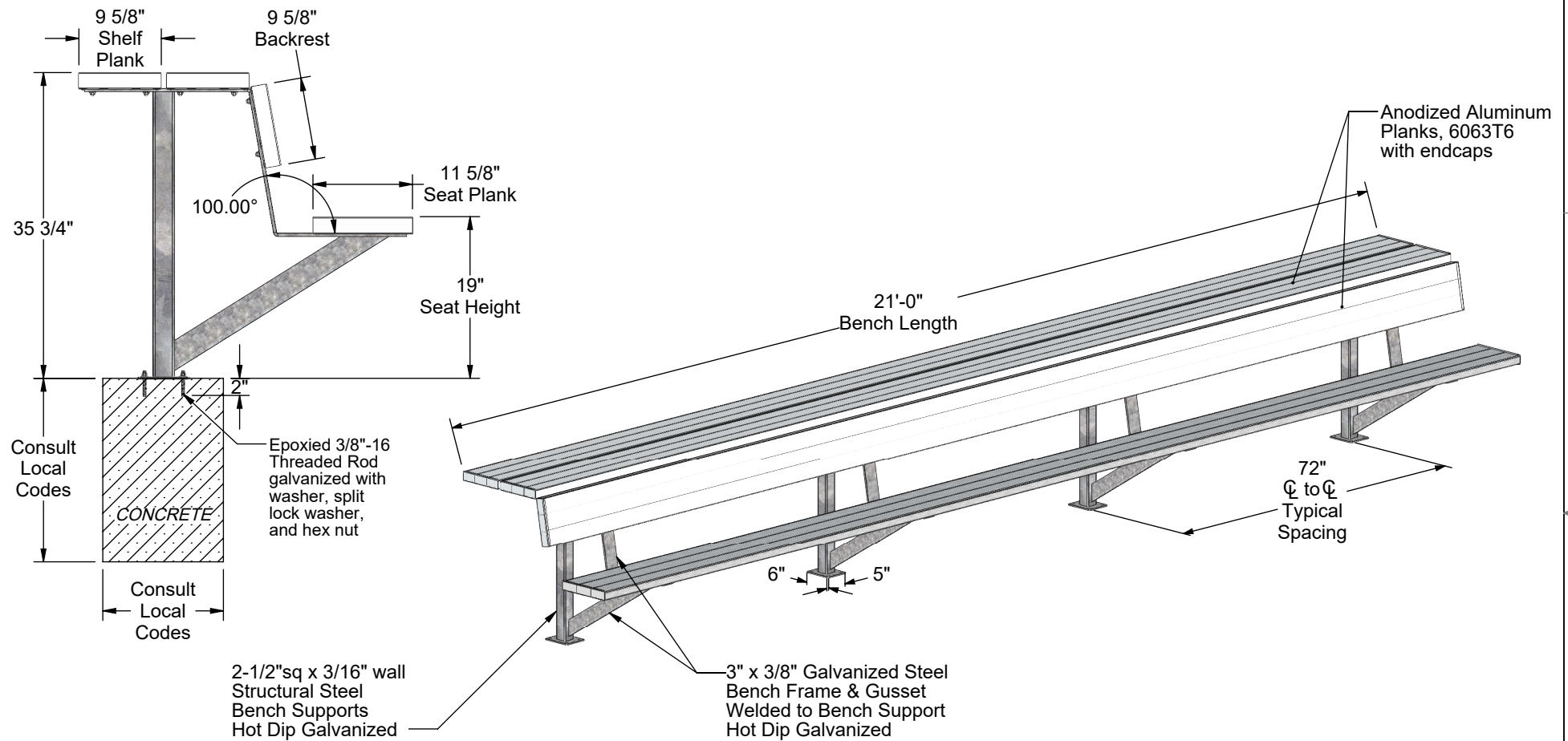
AAE Model No. TB-21B/S-SP
21'-0" Semi-Permanent Team Bench with Backrest & Shelf



Aluminum Athletic Equipment
1000 Enterprise Drive, Royersford, PA 19468
Toll Free: (800) 523-5471 Fax: (610) 825-2378
www.AAEsports.com

TB-21B/S-SP - 21'-0" Semi-Permanent Team Bench (with Backrest & Shelf)

Specifications



Material Specifications

Materials: Anodized Aluminum, 6063T6
Galvanized Steel Tube, 2-1/2"sq x 3/16" wall
Galvanized Steel, 3/8" x 3" HRS
Aluminum & Stainless Steel Hardware
Concrete

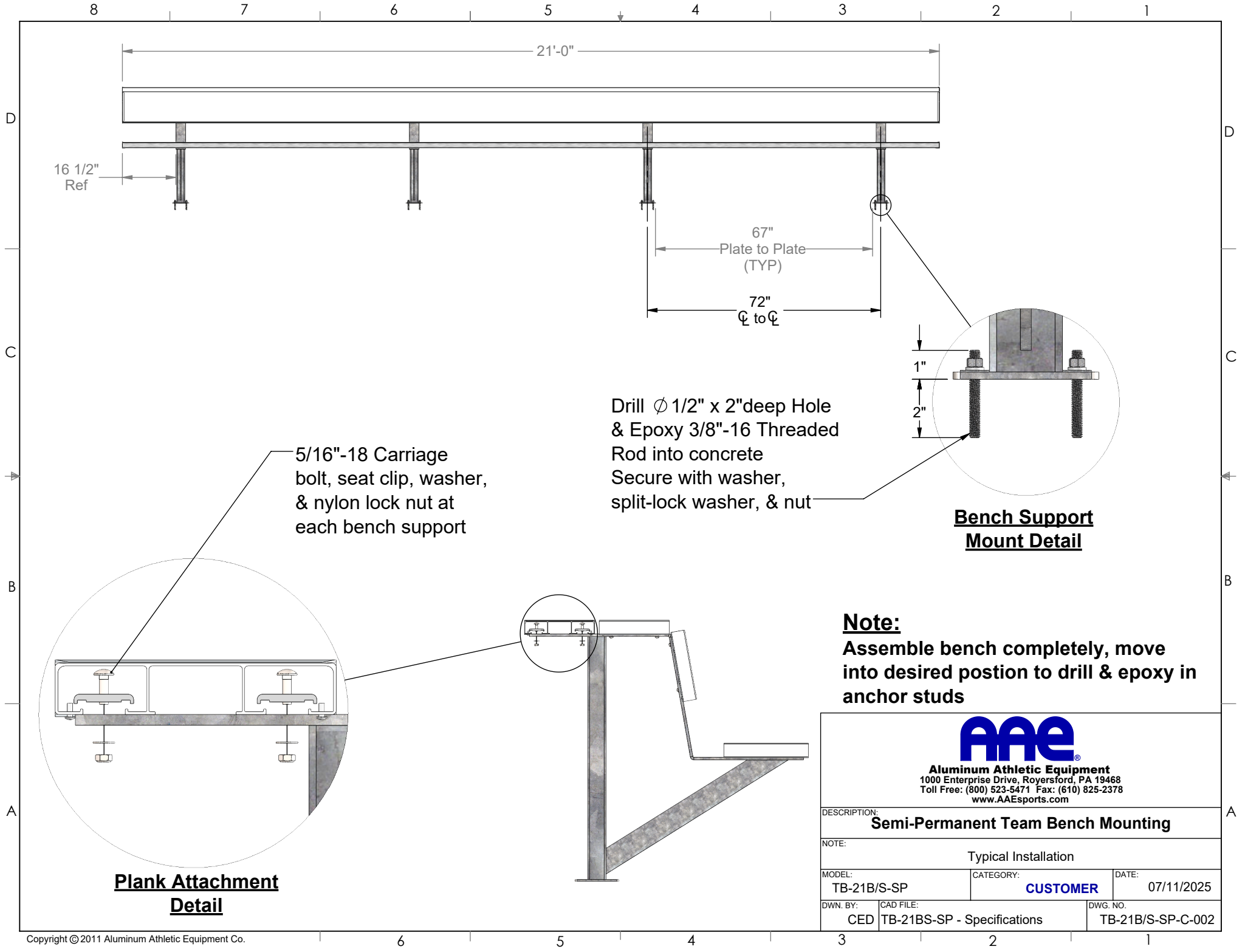
Overall Weight: 345 lbs.
Overall Size: 3' high x 3'-3" deep x 21'-0" long

AAE Warranty Standard



Aluminum Athletic Equipment
1000 Enterprise Drive, Royersford, PA 19468
Toll Free: (800) 523-5471 Fax: (610) 825-2378
www.AAEsports.com

| | | |
|--|---------------------------------------|----------------------------|
| DESCRIPTION: TB-21B/S-SP - Specifications | | |
| NOTE: 21'-0" Semi-Permanent Team Bench with Backrest & Shelf | | |
| MODEL: TB-21B/S-SP | CATEGORY: CUSTOMER | DATE: 07/11/2025 |
| DWN. BY: CED | CAD FILE: TB-21BS-SP - Specifications | DWG. NO. TB-21B/S-SP-C-001 |



**Plank Attachment
Detail**

**Bench Support
Mount Detail**

Note:
Assemble bench completely, move
into desired position to drill & epoxy in
anchor studs



Aluminum Athletic Equipment
1000 Enterprise Drive, Royersford, PA 19468
Toll Free: (800) 523-5471 Fax: (610) 825-2378
www.AAEsports.com

| | | |
|---|--|-------------------------------|
| DESCRIPTION: Semi-Permanent Team Bench Mounting | | |
| NOTE: Typical Installation | | |
| MODEL: TB-21B/S-SP | CATEGORY: CUSTOMER | DATE: 07/11/2025 |
| DWN. BY: CED | CAD FILE: TB-21BS-SP - Specifications | DWG. NO. TB-21B/S-SP-C-002 |