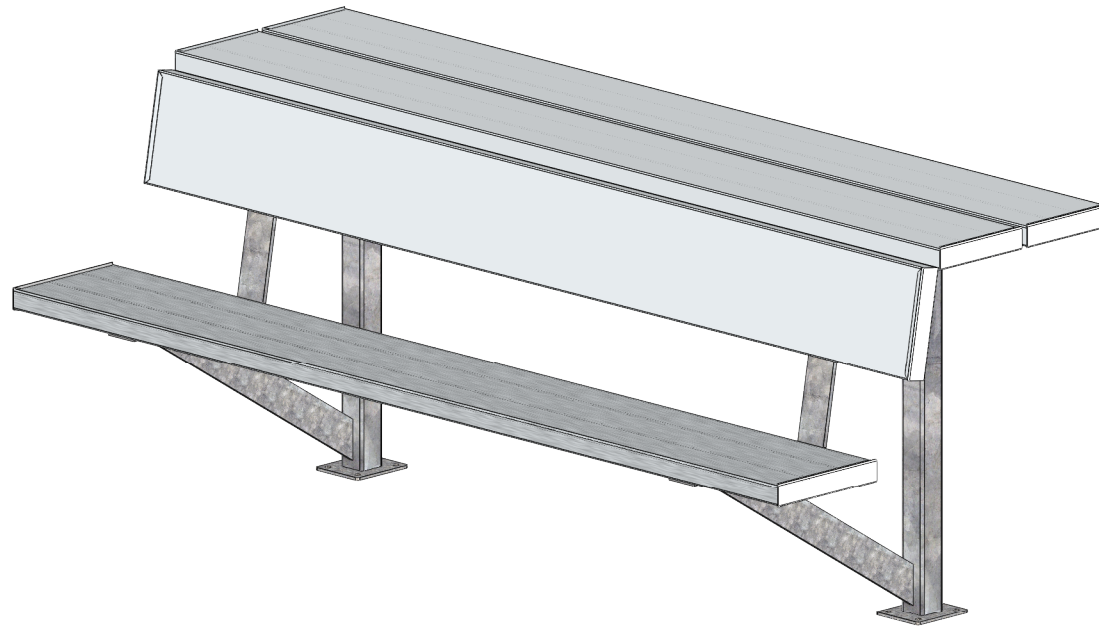


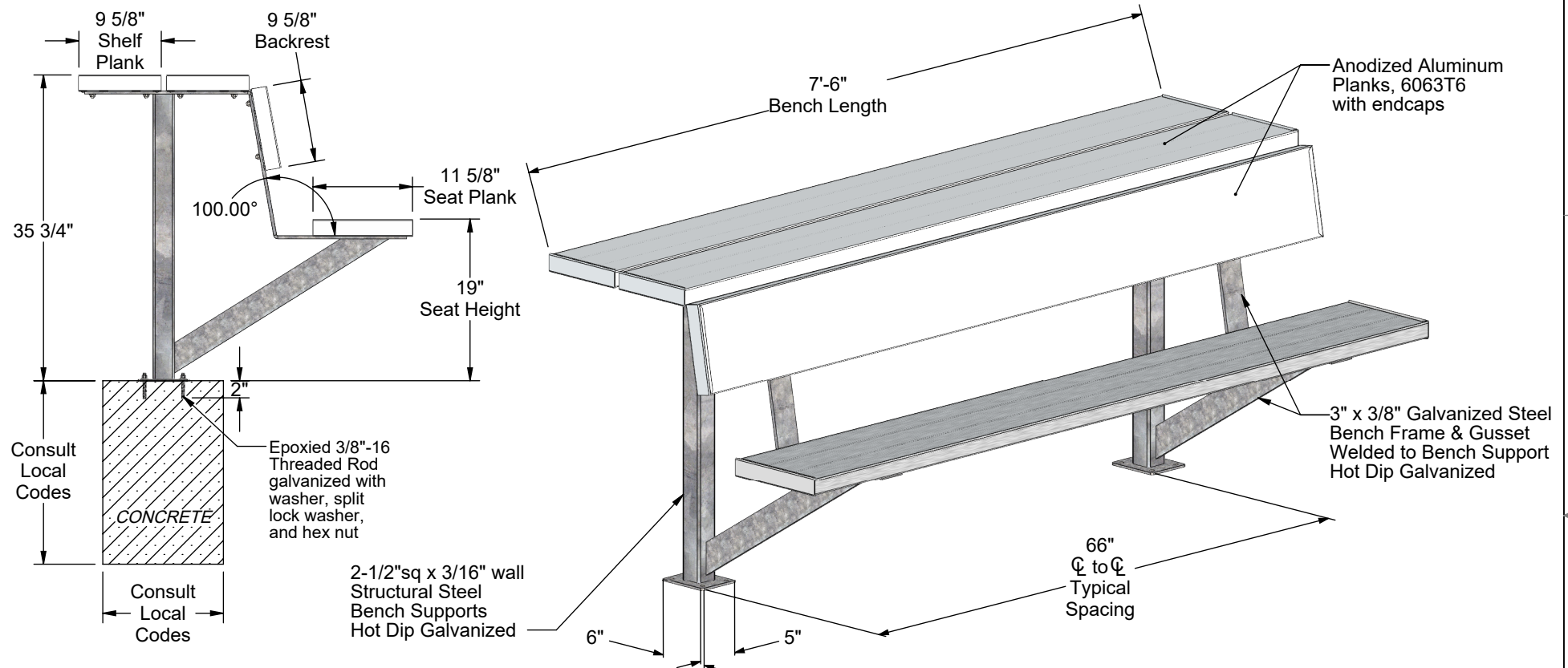
AAE Model No. TB-7.5B/S-SP
7'-6" Semi-Permanent Team Bench with Backrest & Shelf



Aluminum Athletic Equipment
1000 Enterprise Drive, Royersford, PA 19468
Toll Free: (800) 523-5471 Fax: (610) 825-2378
www.AAEsports.com

TB-7.5B/S-SP - 7'-6" Semi-Permanent Team Bench (with Backrest & Shelf)

Specifications



Material Specifications

Materials: Anodized Aluminum, 6063T6
 Galvanized Steel Tube, 2-1/2"sq x 3/16" wall
 Galvanized Steel, 3/8" x 3" HRS
 Aluminum & Stainless Steel Hardware
 Concrete

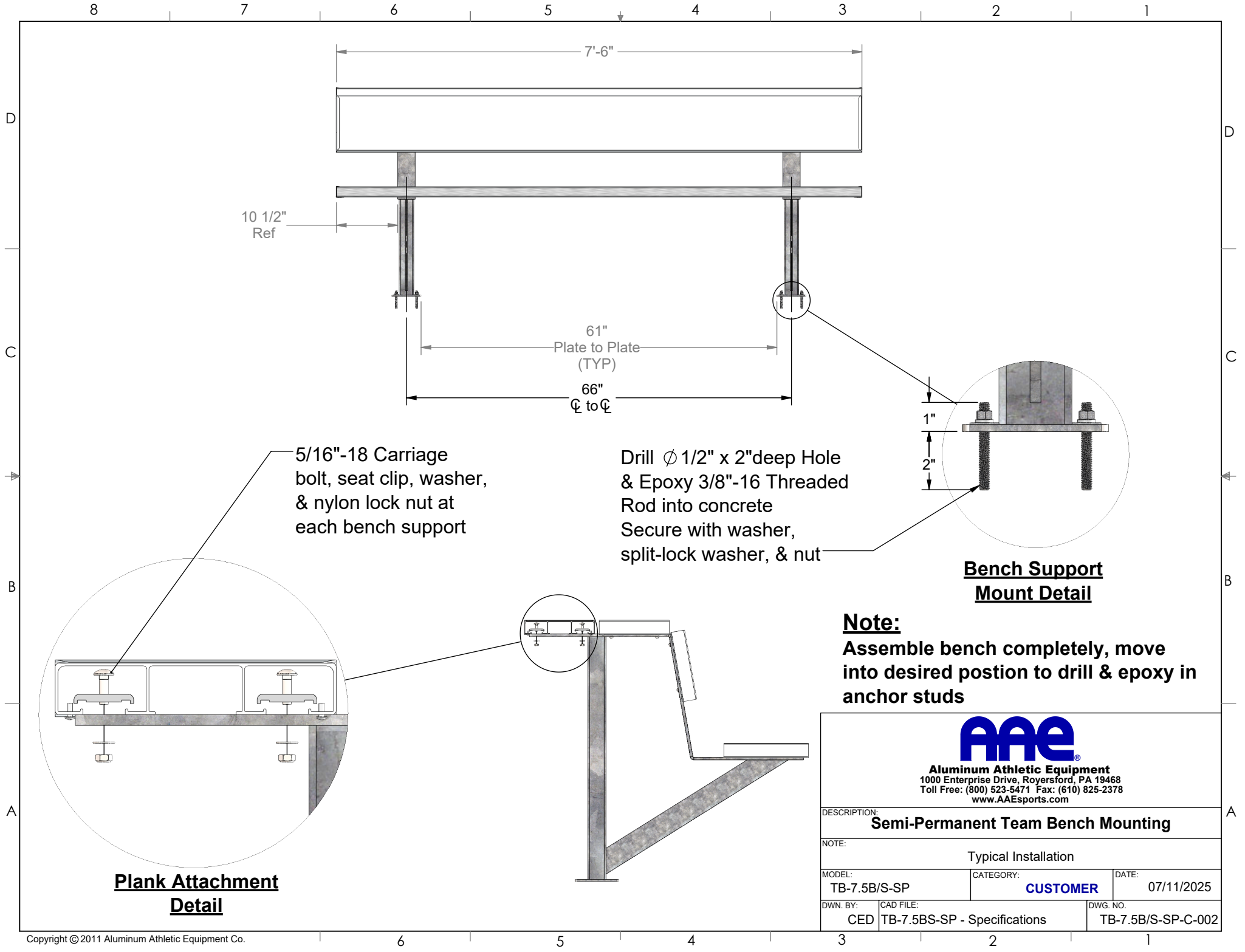
Overall Weight: 150 lbs.
 Overall Size: 3' high x 3'-3" deep x 7'-6" long

AAE Warranty Standard



Aluminum Athletic Equipment
 1000 Enterprise Drive, Royersford, PA 19468
 Toll Free: (800) 523-5471 Fax: (610) 825-2378
www.AAEsports.com

DESCRIPTION:		TB-7.5B/S-SP - Specifications	
NOTE:			
7'-6" Semi-Permanent Team Bench with Backrest & Shelf			
MODEL:		CATEGORY:	DATE:
TB-7.5B/S-SP		CUSTOMER	07/11/2025
DWN. BY:	CAD FILE:	DWG. NO.	
CED	TB-7.5BS-SP - Specifications	TB-7.5B/S-SP-C-001	



Plank Attachment Detail

Bench Support Mount Detail

Note:
Assemble bench completely, move into desired position to drill & epoxy in anchor studs



Aluminum Athletic Equipment
1000 Enterprise Drive, Royersford, PA 19468
Toll Free: (800) 523-5471 Fax: (610) 825-2378
www.AAEsports.com

DESCRIPTION: Semi-Permanent Team Bench Mounting		
NOTE: Typical Installation		
MODEL: TB-7.5B/S-SP	CATEGORY: CUSTOMER	DATE: 07/11/2025
DWN. BY: CED	CAD FILE: TB-7.5BS-SP - Specifications	DWG. NO. TB-7.5B/S-SP-C-002