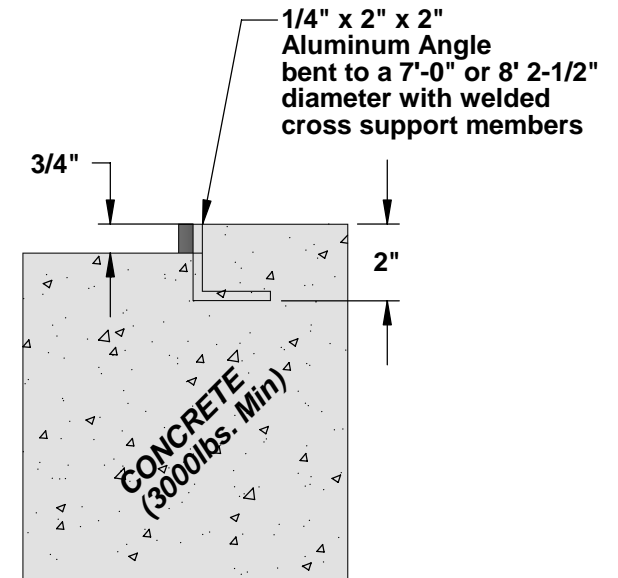
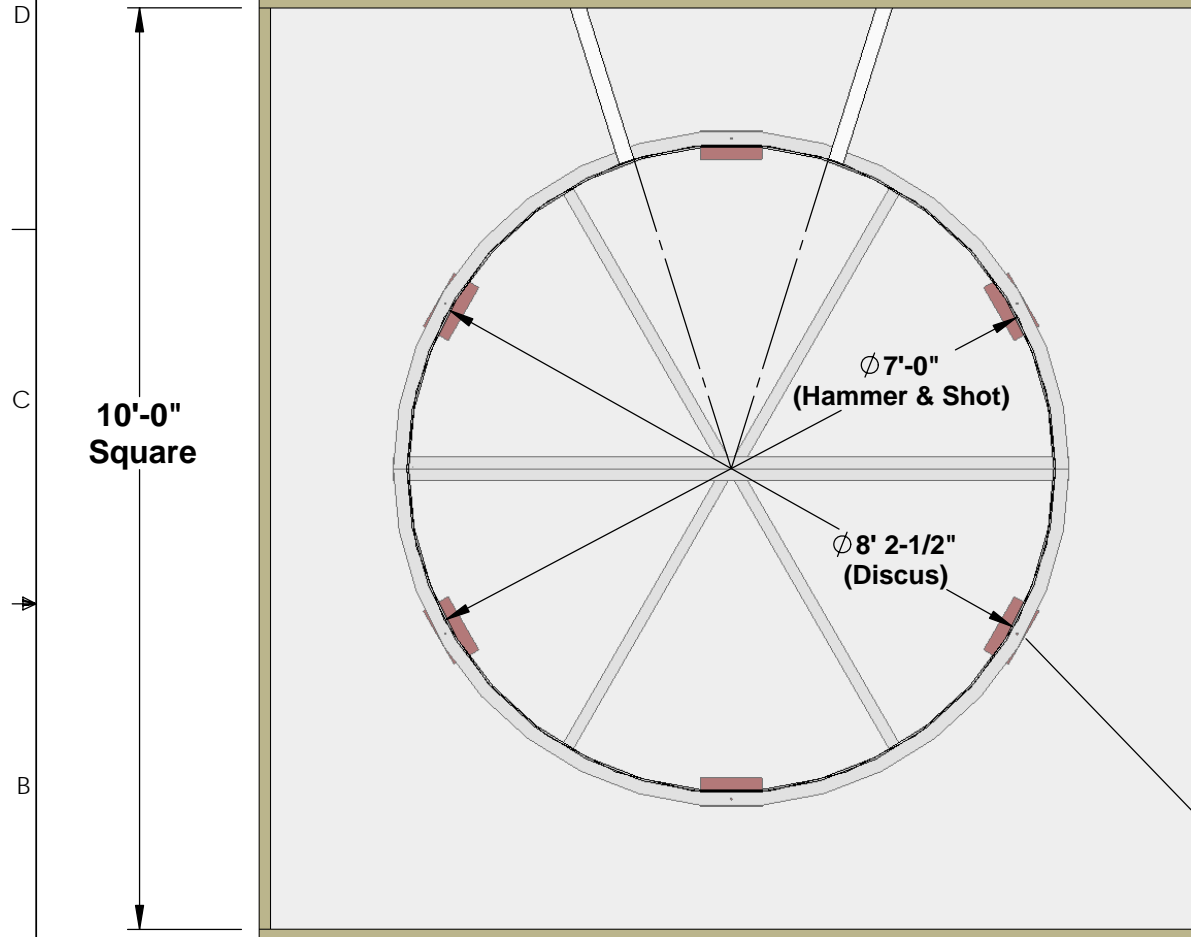


# Webbed Shot, Hammer & Discus Circles

## Specifications

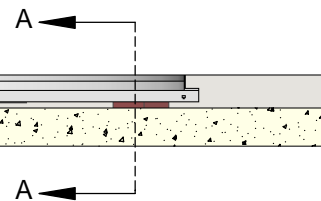


**Section "A-A"**

6" Concrete Min.  
Consult Local  
Building Codes

Wooden  
Form

4"-6"  
Crushed  
Stone



Aluminum Athletic Equipment  
1000 Enterprise Drive, Royersford, PA 19468  
Toll Free: (800) 523-5471 Fax: (610) 825-2378  
www.aesports.com

DESCRIPTION: <b>WDC/WSC - Webbed Discus/Shot Circle - Specifications</b>		
NOTE: Two welded half circles adjoin with hardware.		
MODEL: WDC/WSC	CATEGORY: <b>CUSTOMER</b>	DATE: 04/06/06
DWN. BY: TAD	CAD FILE: WDC/WSC - Specifications	DWG. NO. WDC/WSC-C-001

# WDC & WSC WEBBED DISCUS/SHOT/HAMMER CIRCLES INSTALLATION INSTRUCTIONS

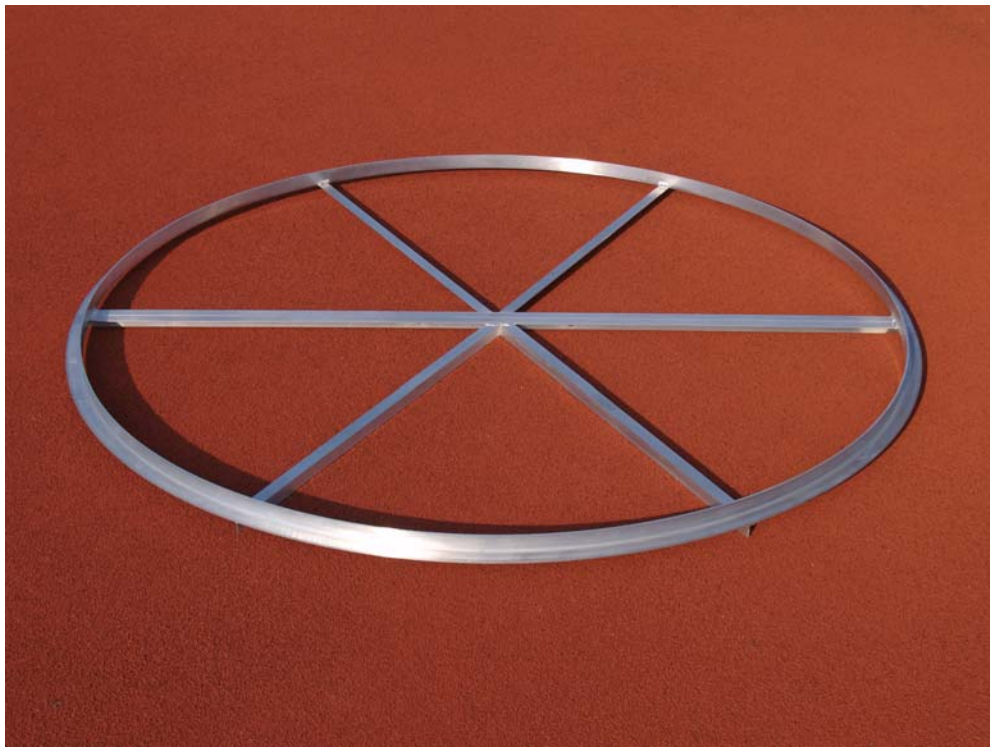
---

## **GENERAL SPECIFICATIONS:**

The Webbed Shot & Hammer circles are 2" x 2" x 1/4" aluminum angle rolled to a specified diameter (7'0" for Shot and Hammer and 8' 2-1/2" for Discus) and welded together into two (2) halves with cross angle supports, the halves bolt together to create one unit in which to level for a permanent concrete pad installation with a depressed throwing area.

Outline for a successful installation is as follows:

- \* The circle must be securely anchored before concrete is poured.
- \* The circle must be held to true size (diameter) during the concrete phase to prevent the circle from creeping out of shape.
- \* The concrete pad and the depressed pad should both be level.
- \* The top of the circle must be flush and level with the finished concrete pad. (Ground level in most applications)
- \* A suitable drainage system should be installed. Consult local building codes for drainage requirements and information.

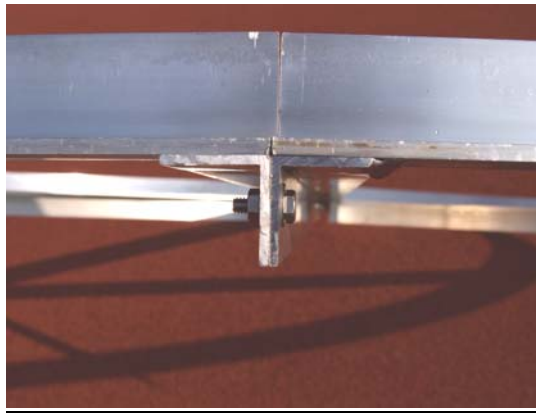


## WDC & WSC WEBBED DISCUS/SHOT/HAMMER CIRCLES INSTALLATION INSTRUCTIONS

---

### **CIRCLE ASSEMBLY:**

1. Using the provided hardware, bolt the two halves together.
2. Make sure the tops of the arcs are flush on both sides of the circle where they are bolted together.
3. Pour concrete into the wooden form to a level 2-1/4" below the top of the wooden form (2" below actual ground level). Allow the concrete to harden.



### **CIRCLE INSTALLATION:**

1. Dig an area approximately 10'0" x 10'0" x 12" deep. **(Consult local building codes for concrete depth and drainage requirements.)**
2. Position and level a wooden concrete form 10'0" square (inside dimensions) on a base of crushed stone **(Consult local codes for drainage requirements)** so that the top of the wooden form is **1/4" above** ground level. (By keeping the form 1/4" above ground level, the concrete pad will have clean, unrounded edges when the form is removed.) Check all levels.
3. Position and level the WDC/WSC circle, centered in the pit. Use bricks (or some sturdy support) to elevate the circle to a level where the top of the circle is even with ground level (1/4" down from the top of the wooden form.). Level circle as necessary on support blocks. Make sure the diameter is correct (7'0" for Shot and Hammer and 8' 2-1/2" for discus) and measurements from all points of the circle are equal. Once circle is leveled and trued, anchor the circle securely to the ground with anchor pins, long bolts, or tie down wire (not included), on minimum 12" intervals. Check all levels. (See Dwg. No. WDC/WSC-C-001 for ref.)
4. With the circle leveled and anchored, pour the cement inside and around the circle to a level that is **3/4" below** the top of the circle. Continue pouring on the outside of the circle until the concrete is flush with the top outside of the circle (1/4" below the

**WDC & WSC  
WEBBED DISCUS/SHOT/HAMMER CIRCLES  
INSTALLATION INSTRUCTIONS**

---

top of the wooden form).

5. Consult with the school's Throw's Coach for the desired surface finish of the concrete on the inside of the circle. Either a fine or medium finish may be desired.
6. Allow concrete to harden.

**FOR TECHNICAL ASSISTANCE, CALL 1-800-523-5471**

***See also products SHFS & DFS  
– Throw Form Systems –  
for an even quicker and easier installation!***

K:\AAE Data\PDF Files\Product Instructions & Parts Lists\Track & Field\SC-HC-DC\SC-2\_HC-2\_DC-2 Installation Instruction.doc  
Copyright © 2001 Aluminum Athletic Equipment Co.